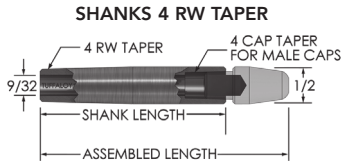
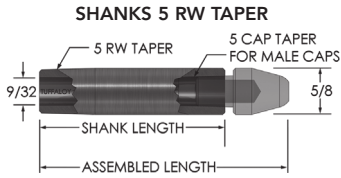


# TUFFALOY CAPS AND SHANKS

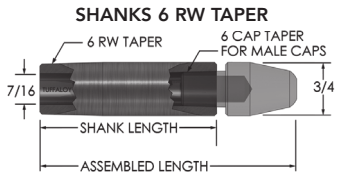
## STRAIGHT SHANKS FOR MALE CAPS (CLASS 2.18200\*)



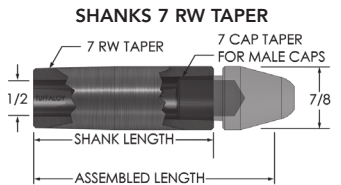
Shank Length	Assembled Length	Description	Part No.
1-1/4	2	TG-2405	161-2405
1-1/2	2-1/4	TG-2406	161-2406
1-3/4	2-1/2	TG-2407	161-2407
2	2-3/4	TG-2408	161-2408
2-1/4	3	TG-2409	161-2409
2-1/2	3-1/4	TG-2410	161-2410
2-3/4	3-1/2	TG-2411	161-2411
3	3-3/4	TG-2412	161-2412
3-1/4	4	TG-2413	161-2413



Shank Length	Assembled Length	Description	Part No.
1-1/4	2	TG-2505	161-2505
1-1/2	2-1/4	TG-2506	161-2506
1-3/4	2-1/2	TG-2507	161-2507
2	2-3/4	TG-2508	161-2508
2-1/4	3	TG-2509	161-2509
2-1/2	3-1/4	TG-2510	161-2510
2-3/4	3-1/2	TG-2511	161-2511
3	3-3/4	TG-2512	161-2512
3-1/4	4	TG-2513	161-2513



Shank Length	Assembled Length	Description	Part No.
1-1/2	2-1/2	TG-2606	161-2606
2	3	TG-2608	161-2608
2-1/2	3-1/2	TG-2610	161-2610
3	4	TG-2612	161-2612



Shank Length	Assembled Length	Description	Part No.
1-1/2	2-1/2	TG-2706	161-2706
2	3	TG-2708	161-2708
2-1/2	3-1/2	TG-2710	161-2710
3	4	TG-2712	161-2712

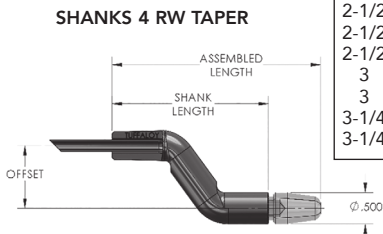
**'E' NOSE**  
4 AND 5 CAP



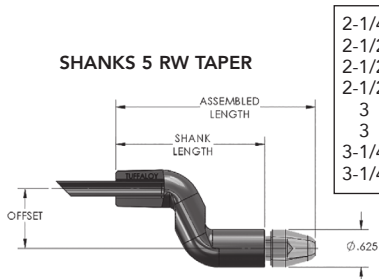
**'F' NOSE**  
4 AND 5 CAP



## BENT SHANKS FOR MALE CAPS (CLASS 2.18200\*)



Shank Length	Off-set	Assem. Length	Description	Part No.
2-1/2	1/2	3-1/4	TG-2410-08	162-2410
2-1/2	3/4	3-1/4	TG-2410-12	162-2420
2-1/2	1	3-1/4	TG-2410-16	162-2430
3	1/2	3-3/4	TG-2412-8	162-2450
3	1-1/4	3-3/4	TG-2412-20	162-2460
3-1/4	1	4	TG-2413-16	162-2470
3-1/4	1-1/4	4	TG-2413-20	162-2480

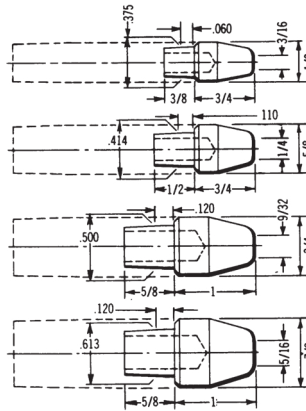


Shank Length	Off-set	Assem. Length	Description	Part No.
2-1/4	1/4	3	TG-2509-4	162-2505
2-1/2	1/2	3-1/4	TG-2510-8	162-2510
2-1/2	3/4	3-1/4	TG-2510-12	162-2520
2-1/2	1	3-1/4	TG-2510-16	162-2530
3	1/2	3-3/4	TG-2512-8	162-2550
3	1-1/4	3-3/4	TG-2512-20	162-2560
3-1/4	1	4	TG-2513-16	162-2570
3-1/4	1-1/4	4	TG-2513-20	162-2580

\* Class 3 Available

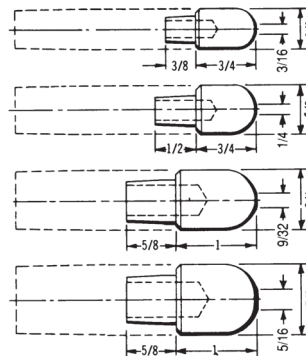
## MALE CAPS

### POINTED TIPS 'A'



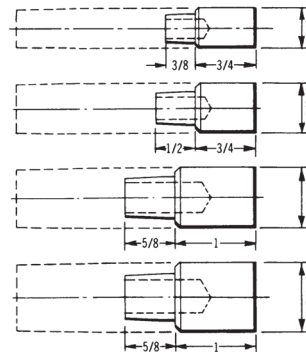
Alloy Class	Cap Taper	Description	Part No.
1	4RW CT	TA-14	111-0014
2	4RW CT	TA-24	112-0024
3	4RW CT	TA-34	122-1034
1	5RW CT	TA-15	111-0015
2	5RW CT	TA-25Z	126-0025
2	5RW CT	TA-25	112-0025
3	5RW CT	TA-35	122-1035
1	6RW CT	TA-16	111-0016
2	6RW CT	TA-26	112-0026
1	7RW CT	TA-17	111-0017
2	7RW CT	TA-27	112-0027

### DOMED TIPS 'B'



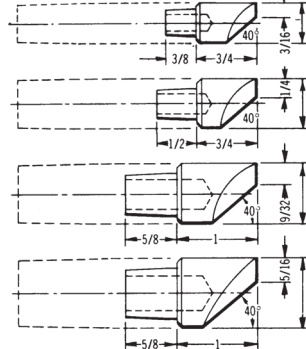
Alloy Class	Cap Taper	Description	Part No.
1	4RW CT	TB-14	113-0014
2	4RW CT	TB-24	114-0024
1	5RW CT	TB-15	113-0015
2	5RW CT	TB-25	114-0025
2	5RW CT	TB-25Z	126-0026
1	6RW CT	TB-16	113-0016
2	6RW CT	TB-26	114-0026
1	7RW CT	TB-17	113-0017
2	7RW CT	TB-27	114-0027

### FLAT TIPS 'C'



Alloy Class	Cap Taper	Description	Part No.
1	4RW CT	TC-14	115-0014
2	4RW CT	TC-24	116-0024
3	4RW CT	TC-34	122-3034
1	5RW CT	TC-15	115-0015
2	5RW CT	TC-25	116-0025
3	5RW CT	TC-35	122-3035
1	6RW CT	TC-16	115-0016
2	6RW CT	TC-26	116-0026
1	7RW CT	TC-17	115-0017
2	7RW CT	TC-27	116-0027

### OFFSET TIPS 'D'



Alloy Class	Cap Taper	Description	Part No.
1	4RW CT	TD-14	117-0014
2	4RW CT	TD-24	118-0024
3	4RW CT	TD-34	122-4034
1	5RW CT	TD-15	117-0015
2	5RW CT	TD-25	118-0025
3	5RW CT	TD-35	122-4035
1	6RW CT	TD-16	117-0016
2	6RW CT	TD-26	118-0026
1	7RW CT	TD-17	117-0017
2	7RW CT	TD-27	118-0027

