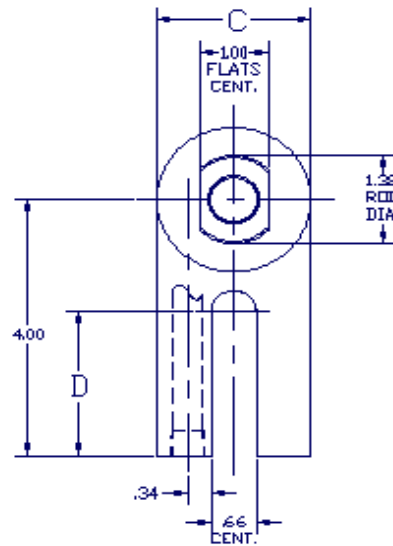
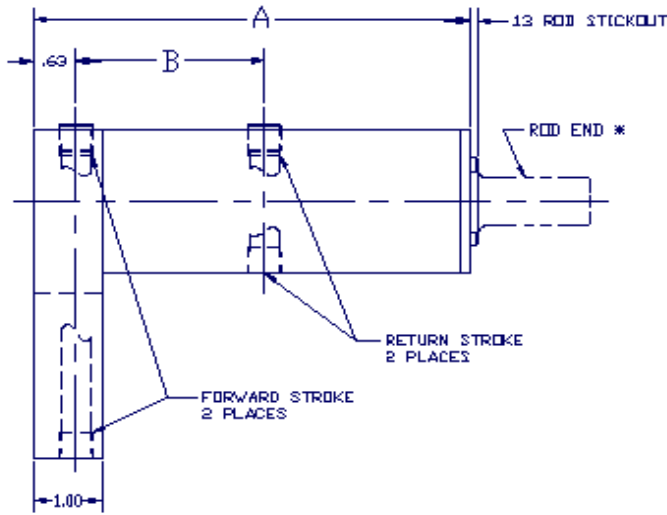


C MOUNT CYLINDERS (1.75" - 3.00" BORE)



DUAL PISTON CYLINDERS					PISTON AREA		
MODEL NO.	STROKE	A	B	C	D	EXT.	RET.
AC-C-G-436-4*	1.00	5.38	2.25	2.00	2.25	4.36	1.96
AC-C-G-436-6*	1.50	6.38	2.75				
AC-C-G-436-8*	2.00	7.38	3.25				
AC-C-G-436-12*	3.00	9.38	4.25				
AC-C-G-436-16*	4.00	11.38	5.25				
AC-C-G-584-4*	1.00	5.38	2.25	2.25	2.25	5.84	2.70
AC-C-G-584-6*	1.50	6.38	2.75				
AC-C-G-584-8*	2.00	7.38	3.25				
AC-C-G-584-12*	3.00	9.38	4.25				
AC-C-G-584-16*	4.00	11.38	5.25				
AC-C-G-750-4*	1.00	5.38	2.25	2.50	2.25	7.50	3.53
AC-C-G-750-6*	1.50	6.38	2.75				
AC-C-G-750-8*	2.00	7.38	3.25				
AC-C-G-750-12*	3.00	9.38	4.25				
AC-C-G-750-16*	4.00	11.38	5.25				
AC-C-G-937-4*	1.00	5.38	2.25	2.75	2.00	9.37	4.46
AC-C-G-937-6*	1.50	6.38	2.75				
AC-C-G-937-8*	2.00	7.38	3.25				
AC-C-G-937-12*	3.00	9.38	4.25				
AC-C-G-937-16*	4.00	11.38	5.25				
AC-C-G-1143-4*	1.00	5.38	2.25	3.00	1.88	11.43	5.50
AC-C-G-1143-6*	1.50	6.38	2.75				
AC-C-G-1143-8*	2.00	7.38	3.25				
AC-C-G-1143-12*	3.00	9.38	4.25				
AC-C-G-1143-16*	4.00	11.38	5.25				
AC-C-G-1360-4*	1.00	5.38	2.25	3.25	1.75	13.60	6.63
AC-C-G-1360-6*	1.50	6.38	2.75				
AC-C-G-1360-8*	2.00	7.38	3.25				
AC-C-G-1360-12*	3.00	9.38	4.25				
AC-C-G-1360-16*	4.00	11.38	5.25				

TRIPLE PISTON CYLINDERS						PISTON AREA	
MODEL NO.	STROKE	A	B	C	D	EXT.	RET.
AC-C-G3-620-4*	1.00	7.38	2.25	2.00	2.25	6.20	1.96
AC-C-G3-620-6*	1.50	8.88	2.75				
AC-C-G3-620-8*	2.00	10.38	3.25				
AC-C-G3-620-12*	3.00	13.38	4.25				
AC-C-G3-620-16*	4.00	16.38	5.25				
AC-C-G3-840-4*	1.00	7.38	2.25	2.25	2.25	8.40	2.70
AC-C-G3-840-6*	1.50	8.88	2.75				
AC-C-G3-840-8*	2.00	10.38	3.25				
AC-C-G3-840-12*	3.00	13.38	4.25				
AC-C-G3-840-16*	4.00	16.38	5.25				
AC-C-G3-1087-4*	1.00	7.38	2.25	2.50	2.25	10.87	3.53
AC-C-G3-1087-6*	1.50	8.88	2.75				
AC-C-G3-1087-8*	2.00	10.38	3.25				
AC-C-G3-1087-12*	3.00	13.38	4.25				
AC-C-G3-1087-16*	4.00	16.38	5.25				
AC-C-G3-1370-4*	1.00	7.38	2.25	2.75	2.00	13.70	4.46
AC-C-G3-1370-6*	1.50	8.88	2.75				
AC-C-G3-1370-8*	2.00	10.38	3.25				
AC-C-G3-1370-12*	3.00	13.38	4.25				
AC-C-G3-1370-16*	4.00	16.38	5.25				
AC-C-G3-1680-4*	1.00	7.38	2.25	3.00	1.88	16.80	5.50
AC-C-G3-1680-6*	1.50	8.88	2.75				
AC-C-G3-1680-8*	2.00	10.38	3.25				
AC-C-G3-1680-12*	3.00	13.38	4.25				
AC-C-G3-1680-16*	4.00	16.38	5.25				
AC-C-G3-2010-4*	1.00	7.38	2.25	3.25	1.75	20.10	6.63
AC-C-G3-2010-6*	1.50	8.88	2.75				
AC-C-G3-2010-8*	2.00	10.38	3.25				
AC-C-G3-2010-12*	3.00	13.38	4.25				
AC-C-G3-2010-16*	4.00	16.38	5.25				

* ADD ROD END STYLE (SEE PAGE 1 FOR OPTIONS)
 ADDITIONAL STROKE LENGTHS ARE AVAILABLE IN .50" INCREMENTS
 ALL PORTS 1/4-18 STANDARD PIPE TAP

Advanced
 Cylinder
 Products, LLC