



The CMW GCAP® electrode is the answer to welding galvanized steels. The GCAP's® revolutionary design, and precision manufacturing from CMW Engineering provides for no sticking from the very first weld. GCAP® electrode nuggets meet or exceed industry standards for high quality welds from the first weld through the life of the cap. This cap design made from R.W.M.A. class 2 material eliminates brass build-up by literally rolling the brass away. You will use

less electric power (up to 25% less) and still achieve superior welds due to GCAP® design. Productivity will increase with up to 10 times more welds without dressing.

For best use of CMW GCAPS® a stepper program is recommended. Consult CMW application engineering.
U.S. Patent 49,954,687; 5,015,816; 5,126,528.
Other patents pending.

CMW FEMALE GCAP® ELECTRODES

ALL DIMENSIONS MARKED WITH AN (*) ARE COMMON TO EACH CAP IN A HORIZONTAL LINE.

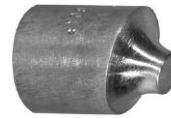
- See pages 12 for Shanks
- See page 70 for suggested weld schedules



STRAIGHT



OFFSET

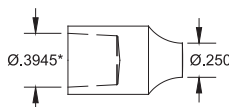


OFFSET 15°

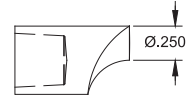


OFFSET 30°

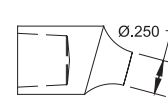
Cap Taper RW #4
Diameter .500*
Length .840*
RWMA Class 2



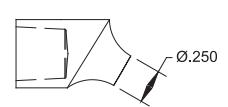
MPG244



MPGD244

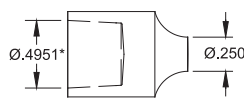


MPGD244-1501

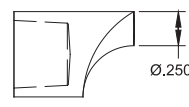


MPGD244-3001

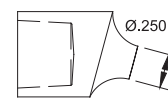
Cap Taper RW #5
Diameter .625*
Length .880*
RWMA Class 2



MPG254



MPGD254

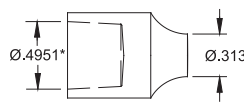


MPGD254-1501

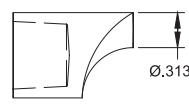


MPGD254-3001

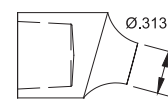
Cap Taper RW #5
Diameter .625*
Length .880*
RWMA Class 2



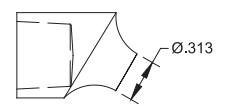
MPG255



MPGD255

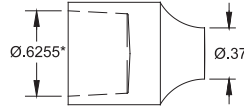


MPGD255-1501

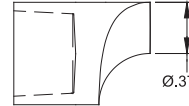


MPGD255-3001

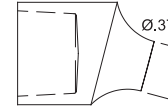
Cap Taper RW #6
Diameter .750*
Length 1.000*
RWMA Class 2



MPG266



MPGD266



MPGD266-1501



MPGD266-3001

CMW MALE GCAP® ELECTRODES

ALL DIMENSIONS MARKED WITH AN (*) ARE COMMON TO EACH CAP IN A HORIZONTAL LINE.

- See pages 13 for Shanks
- See page 70 for suggested weld schedules



STRAIGHT



OFFSET

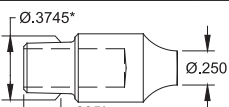


OFFSET 15°

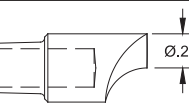


OFFSET 30°

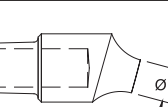
Cap Taper RW #4
Diameter .500*
Length 1.125*
RWMA Class 2



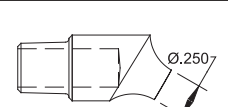
MG244



MGD244

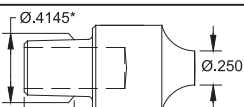


MGD244-1501

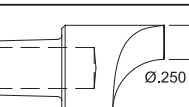


MGD244-3001

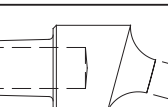
Cap Taper RW #5
Diameter .625*
Length 1.250*
RWMA Class 2



MG254



MGD254

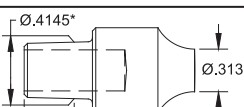


MGD254-1501



MGD254-3001

Cap Taper RW #5
Diameter .625*
Length 1.250*
RWMA Class 2



MG255



MGD255

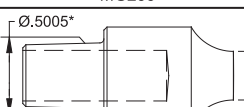


MGD255-1501

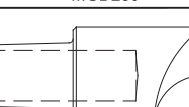


MGD255-3001

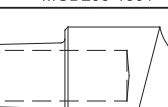
Cap Taper RW #6
Diameter .750*
Length 1.625*
RWMA Class 2



MG266



MGD266



MGD266-1501



MGD266-3001