

SHANKS FOR MALE CAP ELECTRODES



T.J. Snow Co. • (423) 894-6234 • FAX (423) 490-2417 • Authorized Distributor CMW Inc.

CMW shanks are precision manufactured from Class 2 material to provide a high quality mount for cap type electrodes. They are designed for high strength and electrical conductivity.

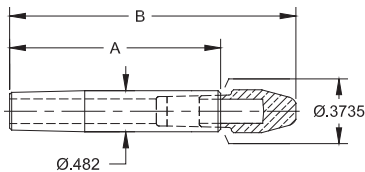
SHANKS FOR MALE CAP ELECTRODES

- See pages 8 & 9 for CMW standard nose and GCAP® electrode caps



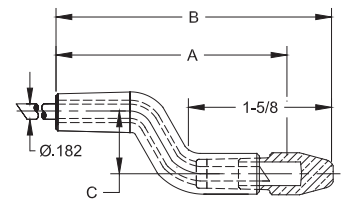
SHANKS FOR MALE CAPS WITH #4 RW TAPERS

Part No.	A	B
3012	1.25	1.88
3013	1.50	2.12
3014	1.75	2.38
3015	2.00	2.62
3016	2.25	2.88
3017	2.50	3.12
3018	2.75	3.38
3019	3.00	3.62
30112	3.25	3.88
30114	3.50	4.12
30116	3.75	4.38
30118	4.00	4.62



BENT OFFSET SHANKS FOR MALE CAPS WITH #4 RW TAPERS

Part No.	A	B	C
3019-08	2.62	3.37	0.50
3019-12	2.56	3.31	0.75
30112-12	2.81	3.56	0.75
30112-16	2.37	3.12	1.00
30116-16	2.87	3.62	1.00
30116-20	2.62	3.37	1.25

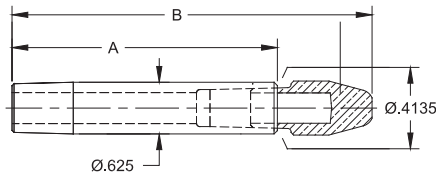


Bent Dimensions for Reference Only



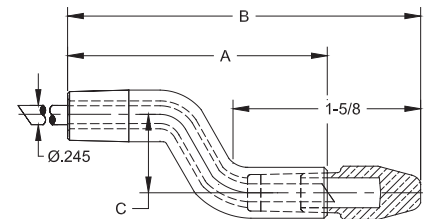
SHANKS FOR MALE CAPS WITH #5 RW TAPERS

Part No.	A	B
3022	1.25	2.00
3023	1.50	2.25
3024	1.75	2.50
3025	2.00	2.75
3026	2.25	3.00
3027	2.50	3.25
3028	2.75	3.50
3029	3.00	3.75
30212	3.25	4.00
30214	3.50	4.25
30216	3.75	4.50
30218	4.00	4.75
30220	4.25	5.00
30222	4.50	5.25



BENT OFFSET SHANKS FOR MALE CAPS WITH #5 RW TAPERS

Part No.	A	B	C
3028-08	2.37	3.12	0.50
3028-12	2.31	3.06	0.75
30212-12	2.81	3.56	0.75
30212-16	2.37	3.12	1.00
30214-12	3.06	3.81	0.75
30214-16	2.62	3.37	1.00
30214-20	2.37	3.12	1.25
30216-16	2.87	3.62	1.00
30216-20	2.62	3.37	1.25

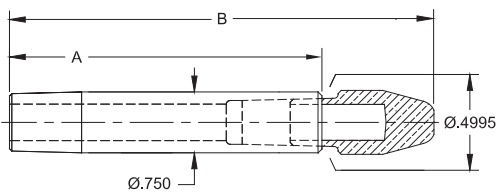


Bent Dimensions for Reference Only



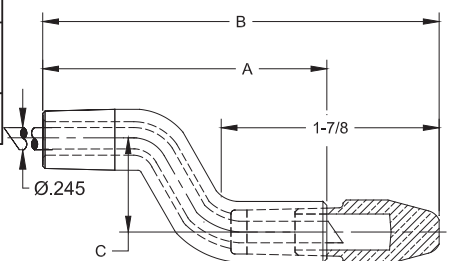
SHANKS FOR MALE CAPS WITH #6 RW TAPERS

Part No.	A	B
3043	1.50	2.62
3044	1.75	2.88
3045	2.00	3.12
3046	2.25	3.38
3047	2.50	3.62
3048	2.75	3.88
3049	3.00	4.12
30412	3.25	4.38
30414	3.50	4.62
30416	3.75	4.88
30418	4.00	5.12
30420	4.25	5.38
30422	4.50	5.62



BENT OFFSET SHANKS FOR MALE CAPS WITH #6 RW TAPERS

Part No.	A	B	C
30412-08	2.62	3.75	0.50
30412-12	2.56	3.69	0.75
30414-12	2.75	3.88	0.75
30416-16	2.87	4.00	1.00
30420-20	3.12	4.25	1.25



Bent Dimensions for Reference Only