

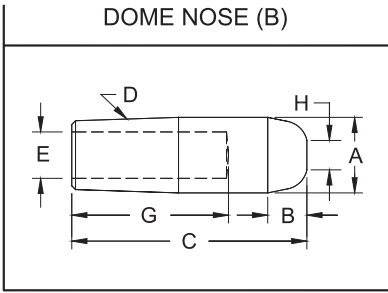


STRAIGHT ELECTRODES

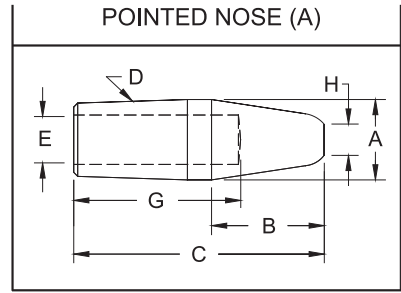
T.J. Snow Co. • (423) 894-6234 • FAX (423) 490-2417 • Authorized Distributor CMW Inc.



DOME NOSE (B)



POINTED NOSE (A)



| 4 RW TAPER (D) | | | |
|----------------|--------------|--------------|---------------|
| RWMA Class 1 | RWMA Class 2 | RWMA Class 3 | Nose Length B |
| 1111 | 3111 | 5111 | 13/64 |
| 1112 | 3112 | 5112 | 1/4 |
| 1113 | 3113 | 5113 | 1/4 |
| 1114 | 3114 | 5114 | 1/4 |
| 1115 | 3115 | 5115 | |
| 1116 | 3116 | 5116 | |
| 1117 | 3117 | 5117 | 1/4 |
| 1118 | 3118 | 5118 | |
| 1119 | 3119 | 5119 | |
| 11112 | 31112 | 51112 | 1/4 |
| 11114 | 31114 | 51114 | |
| 11116 | 31116 | 51116 | |
| 11118 | 31118 | 51118 | |

| COMMON DIMENSIONS | | | | |
|-------------------|--------------|-------------------|------------------|--------------|
| Face Dia. H | Major Dia. A | Water Hole Dia. E | Overall Length C | Hole Depth G |
| 3/16 | .482 | 9/32 | 1 | 5/8 |
| | | | 1-1/4 | 3/4 |
| | | | 1-1/2 | 1 |
| | | | 1-3/4 | 1-1/4 |
| | | | 2 | 1-1/2 |
| | | | 2-1/4 | 1-3/4 |
| | | | 2-1/2 | 2 |
| | | | 2-3/4 | 2-1/4 |
| | | | 3 | 2-1/2 |
| | | | 3-1/4 | 2-3/4 |
| | | | 3-1/2 | 3 |
| | | | 3-3/4 | 3-1/4 |
| 4 | 3-1/2 | | | |

| 4 RW TAPER (D) | | | |
|----------------|--------------|--------------|---------------|
| RWMA Class 1 | RWMA Class 2 | RWMA Class 3 | Nose Length B |
| 1211 | 3211 | 5211 | 3/8 |
| 1212 | 3212 | 5212 | 3/8 |
| 1213 | 3213 | 5213 | 5/8 |
| 1214 | 3214 | 5214 | 3/4 |
| 1215 | 3215 | 5215 | |
| 1216 | 3216 | 5216 | |
| 1217 | 3217 | 5217 | 3/4 |
| 1218 | 3218 | 5218 | |
| 1219 | 3219 | 5219 | |
| 12112 | 32112 | 52112 | 3/4 |
| 12114 | 32114 | 52114 | |
| 12116 | 32116 | 52116 | |
| 12118 | 32118 | 52118 | |

| 5 RW TAPER (D) | | | |
|----------------|--------------|--------------|---------------|
| RWMA Class 1 | RWMA Class 2 | RWMA Class 3 | Nose Length B |
| 1122 | 3122 | 5122 | 3/8 |
| 1123 | 3123 | 5123 | |
| 1124 | 3124 | 5124 | |
| 1125 | 3125 | 5125 | |
| 1126 | 3126 | 5126 | |
| 1127 | 3127 | 5127 | |
| 1128 | 3128 | 5128 | |
| 1129 | 3129 | 5129 | |
| 11212 | 31212 | 51212 | |
| 11214 | 31214 | 51214 | |
| 11216 | 31216 | 51216 | |
| 11218 | 31218 | 51218 | |
| 11220 | 31220 | 51220 | |
| 11222 | 31222 | 51222 | |

| COMMON DIMENSIONS | | | | |
|-------------------|--------------|-------------------|------------------|--------------|
| Face Dia. H | Major Dia. A | Water Hole Dia. E | Overall Length C | Hole Depth G |
| 1/4 | .625 | 3/8 | 1-1/4 | 3/4 |
| | | | 1-1/2 | 3/4 |
| | | | 1-3/4 | 1 |
| | | | 2 | 1-1/4 |
| | | | 2-1/4 | 1-1/2 |
| | | | 2-1/2 | 1-3/4 |
| | | | 2-3/4 | 2 |
| | | | 3 | 2-1/4 |
| | | | 3-1/4 | 2-1/2 |
| | | | 3-1/2 | 2-3/4 |
| | | | 3-3/4 | 3 |
| | | | 4 | 3-1/4 |
| 4-1/4 | 3-1/2 | | | |
| 4-1/2 | 3-3/4 | | | |

| 5 RW TAPER (D) | | | |
|----------------|--------------|--------------|---------------|
| RWMA Class 1 | RWMA Class 2 | RWMA Class 3 | Nose Length B |
| 1222 | 3222 | 5222 | 1/2 |
| 1223 | 3223 | 5223 | 3/4 |
| 1224 | 3224 | 5224 | 3/4 |
| 1225 | 3225 | 5225 | 1-1/8 |
| 1226 | 3226 | 5226 | |
| 1227 | 3227 | 5227 | |
| 1228 | 3228 | 5228 | 1-1/8 |
| 1229 | 3229 | 5229 | |
| 12212 | 32212 | 52212 | |
| 12214 | 32214 | 52214 | 1-1/8 |
| 12216 | 32216 | 52216 | |
| 12218 | 32218 | 52218 | |
| 12220 | 32220 | 52220 | |
| 12222 | 32222 | 52222 | 1-1/8 |

*Electrodes of other tapers and alloys available upon request.