



CRANK ELECTRODES - CASTINGS, FORGED

T.J. Snow Co. • (423) 894-6234 • FAX (423) 490-2417 • Authorized Distributor CMW Inc.

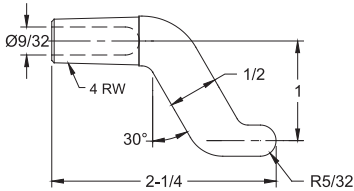
FEATURES AND SPECIFICATIONS

- Very strong bend electrodes for higher force applications
- Offset electrodes are for hard to reach locations
- Long lasting heavy duty electrodes

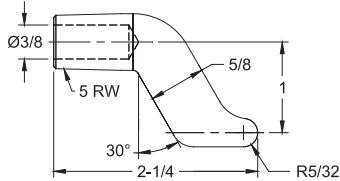
- Can be used in many job shop applications
- Works with all industry standard holders
- Use with 4 & 5 R.W.M.A Holders

- Electrical conductivity up to 80% IACS for castings & forged crank electrodes
- Rockwell hardness up to 70 HRB for castings & forged crank electrodes

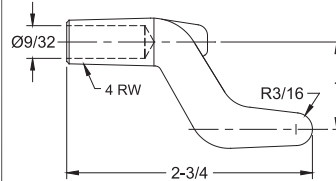
CRANK ELECTRODES - CASTING, FORGED



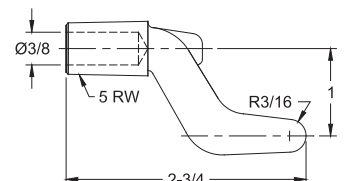
16-3835 RWMA CLASS 2 CASTING



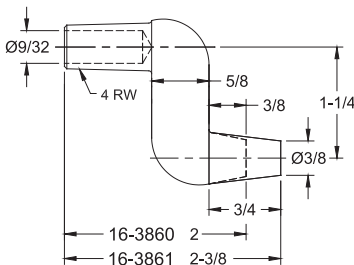
16-3836 RWMA CLASS 2 CASTING



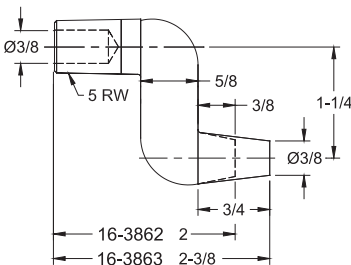
16-3837 RWMA CLASS 2 CASTING



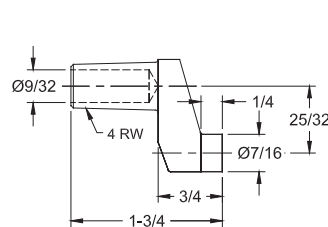
16-3838 RWMA CLASS 2 CASTING



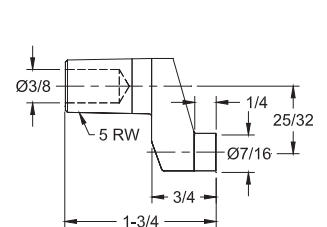
RWMA CLASS 2 FORGED



RWMA CLASS 2 FORGED



16-3873 RWMA CLASS 2 CASTING



16-3874 RWMA CLASS 2 CASTING