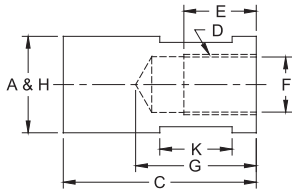




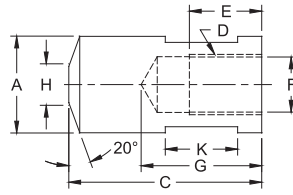
THREADED ELECTRODES

T.J. Snow Co. • (423) 894-6234 • FAX (423) 490-2417 • Authorized Distributor CMW Inc.

THREADED ELECTRODES



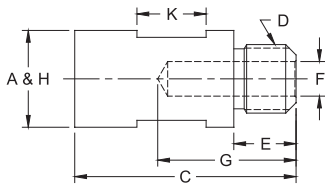
FEMALE FLAT



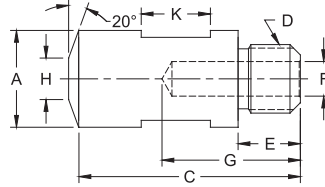
FEMALE TRUNCATED

CLASS 2 FEMALE THREADED ELECTRODES

CLASS 2 PART No.	Type	O.A.L. C	Thread D	Major Dia. A	Thread Depth E	Water Hole Depth G	Water Hole Dia. F	Over Wrench Flats	Wrench Flat Length K	Welding Face Dia. H
336508	Female Flat	2	5/8-18	1	3/4	1-1/4	37/64	7/8	3/4	1
336510				1-1/4				3/4	1-1/4	
336512				1-1/2				7/8	1-1/2	
326508	Female Truncat.	2	5/8-18	1	3/4	1-1/4	37/64	7/8	3/4	3/8
326510				1-1/4				3/4	1/2	
326512				1-1/2				7/8	5/8	



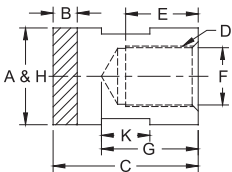
MALE FLAT



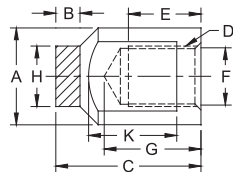
MALE TRUNCATED

CLASS 2 MALE THREADED ELECTRODES

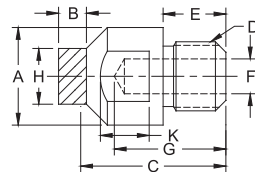
CLASS 2 PART No.	Type	O.A.L. C	Thread D	Major Dia. A	Thread Depth E	Water Hole Depth G	Water Hole Dia. F	Over Wrench Flats	Wrench Flat Length K	Welding Face Dia. H
330507	Male Flat	2	5/8-18	7/8	9/16	1-1/4	5/16	3/4	5/8	7/8
330508				1	9/16		5/16	7/8	5/8	1
335506				3/4	15/32		5/16	1/2	3/4	
335507				7/8	15/32		5/16	3/4	7/8	
335508	Male Truncat.	2	5/8-11	3/4	5/8	1-1/4	3/8	7/8	7/8	1
335510				1-1/4	5/8		3/8	1	3/4	1-1/4
335512				7/8-9	3/4		1/2	1-1/4	7/8	1-1/2
325506	Male Truncat.	2	5/8-11	3/4	15/32	1-1/4	5/16	5/8	1/2	1/4
325507				7/8	15/32		5/16	3/4	5/8	5/16
325508				1	5/8		7/8	5/8	3/8	3/8
325510				1-1/4	5/8		3/8	3/4	1/2	



10W FACED FEMALE FLAT



10W FACED FEMALE CENTERED



10W FACED MALE CENTERED

10W FACED MALE & FEMALE THREADED ELECTRODES

10W PART No.	Type	O.A.L. C	Thread D	Major Dia. A	Thread Depth E	Water Hole Depth G	Water Hole Dia. F	Over Wrench Flats	Wrench Flat Length K	Welding Face Dia. H	10W Thickness B		
636308	Female Flat	1-1/2	5/8-18	1	3/4	1	37/64	7/8	1/2	1	1/4		
636310				1-1/4				1/2	1-1/4				
636312				1-1/2				7/8	1-1/2				
626308	Female Centered	1-1/2	5/8-18	1	3/4	1	37/64	7/8	13/16	5/8	1/4		
626310				1-1/4				1	11/16	5/8			
620307	Male Centered	1-1/2	5/8-18	7/8	9/16	1	5/16	3/4	3/4	1/2	1/4		
625206				1-1/4	5/8-11	3/4	15/32	7/8	5/16	5/8	3/4	1/2	3/16
625308				1-5/8	3/4-10	1	5/8	1-3/16	3/8	7/8	7/8	5/8	1/4

FEMALE FLAT



FEMALE TRUNCATED



MALE FLAT



MALE TRUNCATED



10W FACED FEMALE FLAT



10W FACED FEMALE CENTERED



10W FACED MALE CENTERED

