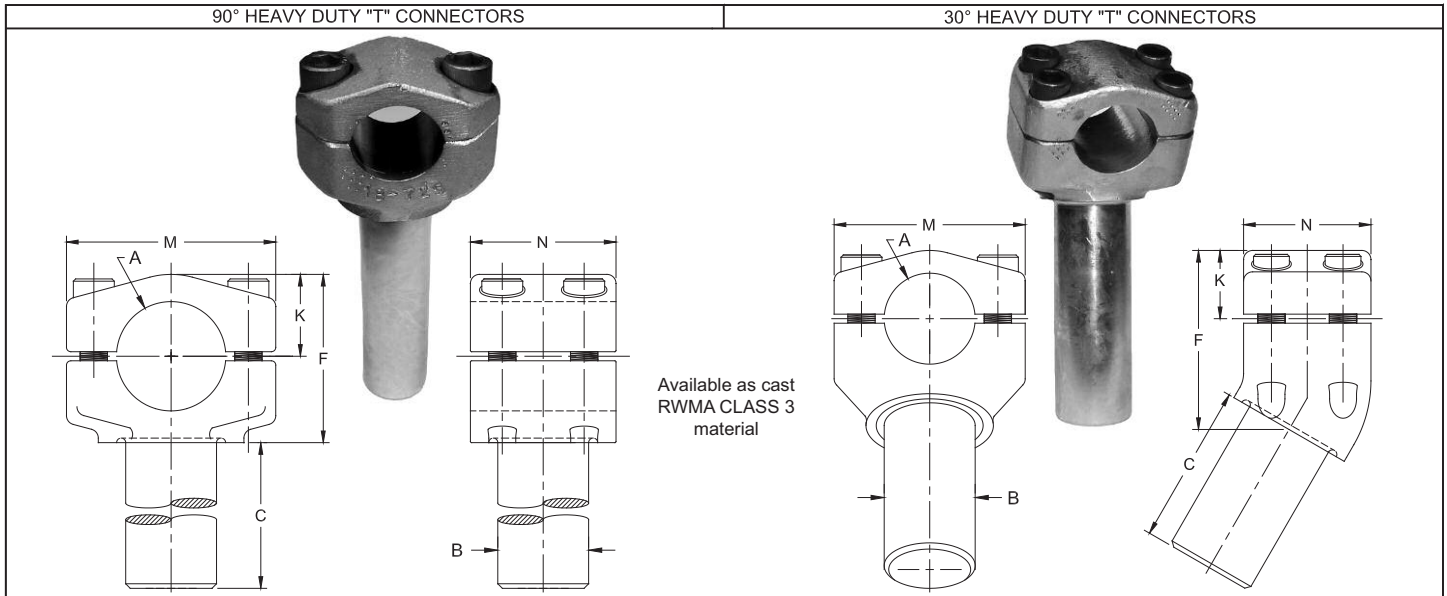


# "T" CONNECTORS FOR HOLDERS



T.J. Snow Co. • (423) 894-6234 • FAX (423) 490-2417 • Authorized Distributor CMW Inc.

## "T" CONNECTORS FOR HOLDERS



### HEAVY DUTY 90° "T" CONNECTORS

"T" Connector Assy. No.	Hole Dia. A	Shank Dia. B*	Shank Length C	Head Height F	Hole C.L. Over Top K	Length M	Width N	Number of Bolts
18-725 18-726	1	7/8 1	3	1-3/4	3/4	2-5/16	1-1/2	2 Bolt
18-727 18-728	1-1/4 1-1/2	1-1/4	3-1/2 4	2 2-5/16	15/16 1-1/8	2-5/8 2-7/8	1-3/4 2	4 Bolt
18-729 18-730	1-1/2 1-1/4	1-1/2	4	2-5/16	1-1/8	2-7/8	2	

### HEAVY DUTY 30° "T" CONNECTORS

"T" Connector Assy. No.	Hole Dia. A	Shank Dia. B	Shank Length C	Head Height F	Hole C.L. Over Top K	Length M	Width N	Number of Bolts
18-731 18-732	1	7/8 1	3	2	3/4	2-5/16	1-1/2	2 Bolt
18-733 18-734	1-1/4 1-1/2	1-1/4 1-1/2	3-1/2 4	2-13/32 2-47/64	15/16 1-1/8	2-5/8 2-7/8	1-3/4 2	4 Bolt

These 30° "T" Connectors may be interchanged with the 90° universal type "T" Connectors. See page 38 for suggested setups.

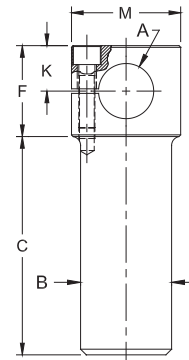
"T" Connectors of other shank diameters and lengths may be ordered upon request.

Available as cast RWMA CLASS 2 material

### SMALL BARREL 90° "T" CONNECTORS

"T" Connector Assy. No.	Hole Dia. A	Shank Dia. B	Shank Length C	Head Height F	Hole C.L. Over Top K	Dia. M	Number of Bolts
18-720 18-721	3/4	3/4 7/8	3	1-1/4	5/8	1-1/2	1 Bolt
18-722 18-723 18-724		1 1-1/4 1-1/2					

"T" Connectors of other shank diameters and lengths may be ordered upon request.

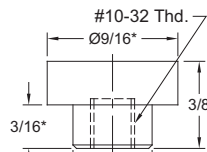


## THREADED SOCKET (OR BUTTON) ELECTRODES

(USE WITH 900 AND 950 SERIES HOLDERS ON PAGE 48) ALL DIMENSIONS WITH AN (\*) ARE COMMON TO EACH CAP IN A HORIZONTAL LINE.



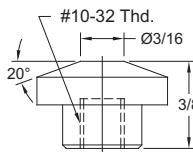
FLAT FACE



RWMA CLASS 1 18-970  
RWMA CLASS 2 18-980  
RWMA CLASS 3 18-990



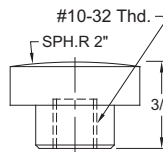
TRUNCATED FACE



RWMA CLASS 1 18-971  
RWMA CLASS 2 18-981  
RWMA CLASS 3 18-991



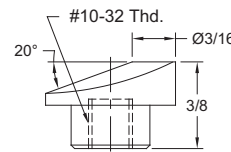
RADIUS FACE



RWMA CLASS 1 18-972  
RWMA CLASS 2 18-982  
RWMA CLASS 3 18-992



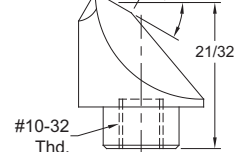
OFFSET FACE



RWMA CLASS 1 18-973  
RWMA CLASS 2 18-983  
RWMA CLASS 3 18-993



30° OFFSET FACE



RWMA CLASS 1 18-974  
RWMA CLASS 2 18-984  
RWMA CLASS 3 18-994