

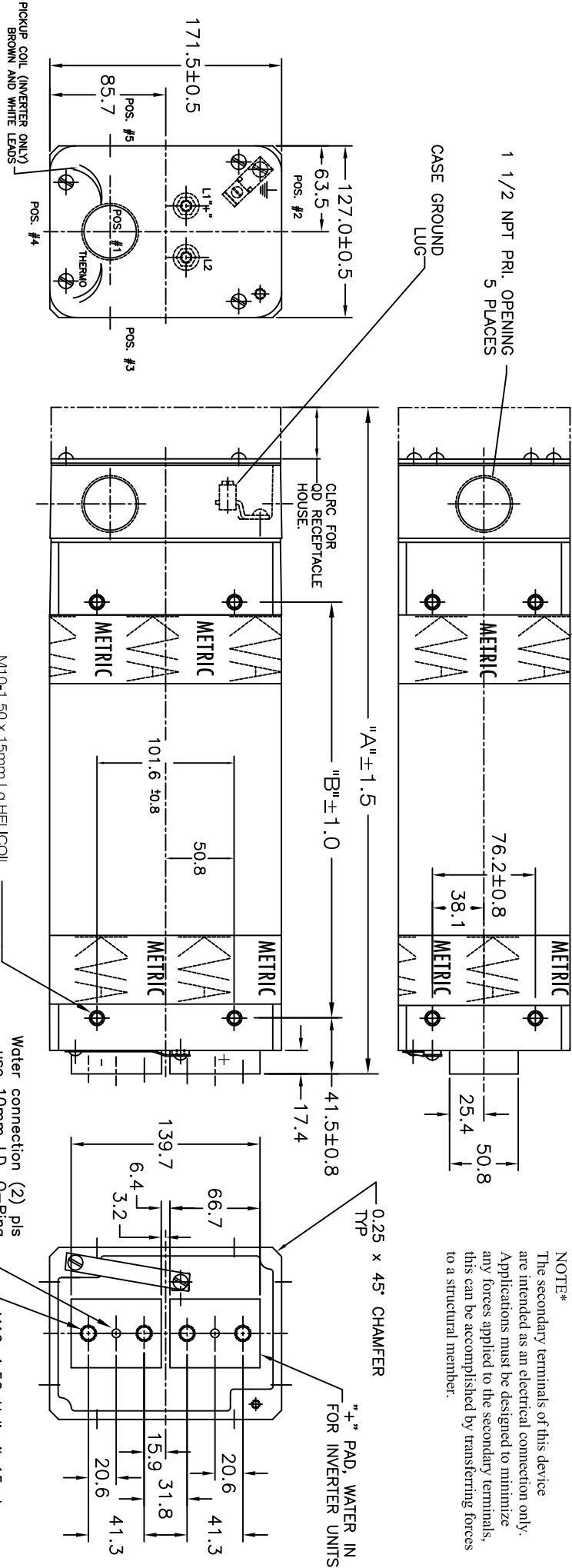
NOTE:  
OPTIONAL ADAPTER KIT "R3210" (SUPERTANIUM HARDWARE)

KVA IDENTIFICATION  
REFER TO "KVA"  
COLUMN IN TABLE

WHITE TEXT  
BLUE BACKGROUND

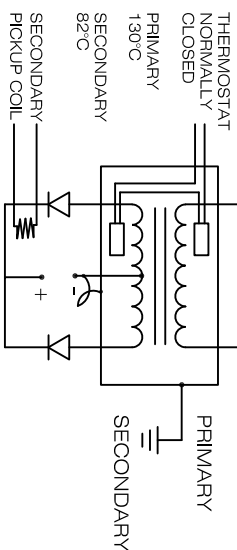
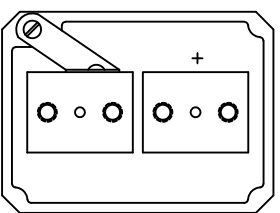
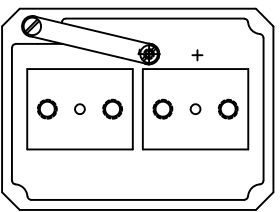
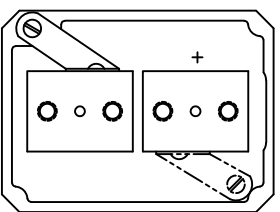
Roman Model	FCA NPM NUMBER	KVA	PRI V / FREQ	V/Sec	WEIGHT/LBS (KGS)	Dim "a" Dim "b"	Turns Ratio	MAX. Δ P	Flow Rate
T48655CS198WX	91-901-1213	65	480/60	6.3	85(38.8)	463 279	76:1	4 PSI (.27 BAR)	4 LPM
T48693XS197WX	91-901-1214	93	480/60	10.9	89(40.6)	463 279	88:2	8 PSI (.55 BAR)	4 LPM
T486136XS198WX	91-901-1215	136	480/60	16.0	119(54.3)	565 381	60:2	8 PSI (.55 BAR)	4 LPM
TDC-1064	91-901-1216	100	650/1000	9.0	70(32)	463 279	72:1	14 PSI (.96 BAR)	7.5 LPM
TDC-1129	91-901-1217	150	650/1000	13.0	70(32)	463 279	50:1	14 PSI (.96 BAR)	7.5 LPM
TDC-6232		100	500/1000	9.0	70(32)	463 279	55:1	14 PSI (.96 BAR)	7.5 LPM

NOTE\*  
The secondary terminals of this device are intended as an electrical connection only. Applications must be designed to minimize any forces applied to the secondary terminals, this can be accomplished by transferring forces to a structural member.



GROUNDING

ALTERNATIVE



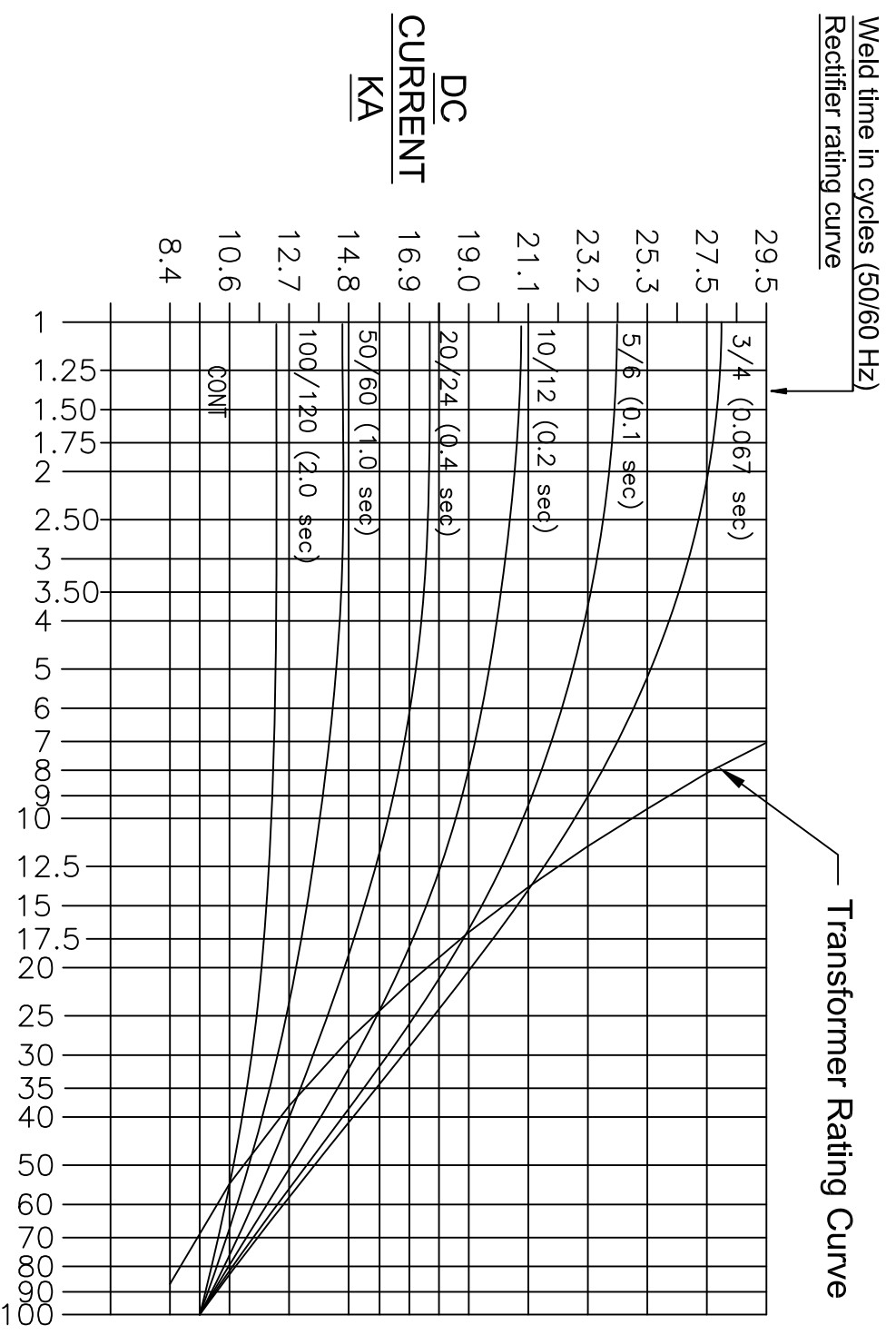
TRANSFORMER CASE MUST BE GROUNDED.  
TRANSFORMER WILL BE SHIPPED WITH A JUMPER CONNECTING SECONDARY CENTER TAP TO CASE. USER MUST PROVIDE APPROPRIATE GROUNDING OF SECONDARY CIRCUIT. FOR APPLICATIONS ABOVE A 20% DUTY CYCLE, CONTACT ROMAN MANUFACTURING FOR ASSISTANCE.

All dimensions in Millimeters

REV	DESCRIPTION	DATE
N	UPDATED TABLE TO FCA NPM NUMBER, FROM DCX/NPM CODE	12MAR15
M	ADDED TDC-6232 TO TABLE	4JUN08
L	ADDED 45° CHAMFER TO BODY CLAMPS (WAS RADIIUS)	09AUG06

PHYSICAL DRAWING

# Power Supply Rating Diagram, Single Phase, Center Tap Rectifier. Size "2" Rectifier




Where used

TDC-1042
TDC-1060
TDC-1061
TDC-1064
TDC-1102
TDC-5007
TDC-5181
TDC-5182
TDC-5277
TDC-5345
TDC-5515
TDC-5602
TDC-5731
TDC-6095
TDC-6232
TDC-6810
TDC-7073

**Notes:**  
 These curves are based on rated water flow of 2 G.P.M (7.5 L.P.M.).  
 Maximum water in temperature of 30°C.  
 For applications above a 20% duty cycle, contact Roman Manufacturing for assistance.  
**Rectifier Rating:**  
 % Duty Cycle is based on shortest time from beginning of one weld to the beginning of next weld. On time/(On + Off time).  
**Transformer Rating:**  
 % Duty Cycle is total "On" time in one minute.

## DUTY CYCLE (%)

REV	DESCRIPTION	DATE
L	Added TDC-6810 to Where Used List	24May11
<small>THIS DRAWING AND ALL THE INFORMATION AND TECHNOLOGY IN IT ARE EXCLUSIVE, CONFIDENTIAL AND PROPRIETARY TO ROMAN MFG. INC. THIS DRAWING IS OWNED BY ROMAN MFG. INC. AND UNLESS SPECIFICALLY AUTHORIZED IN WRITING, NO COPIES SHALL BE MADE OF THIS DRAWING, AND SHALL BE USED ONLY FOR THE LIMITED PURPOSE FOR WHICH IT IS DISCLOSED AND ONLY TO THE BENEFIT OF ROMAN MFG. INC. AND IT AND ANY COPIES, AUTHORIZED OR NOT, SHALL BE IMMEDIATELY RETURNED UPON ANY REQUEST THEREFORE.</small>		
SCALE:	None	DRAWN BY: ACG
DATE:	16Jun98	REVISED:
		
Rating Curve		
DRAWING NUMBER:		1110078