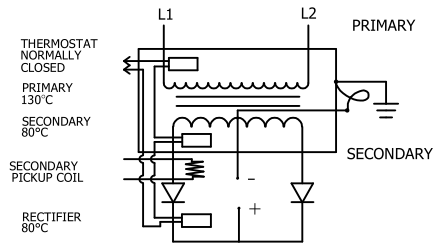


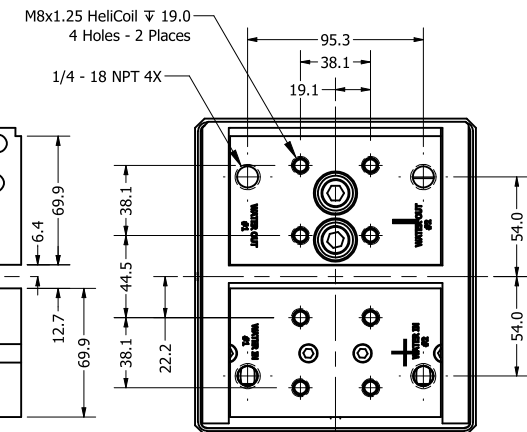
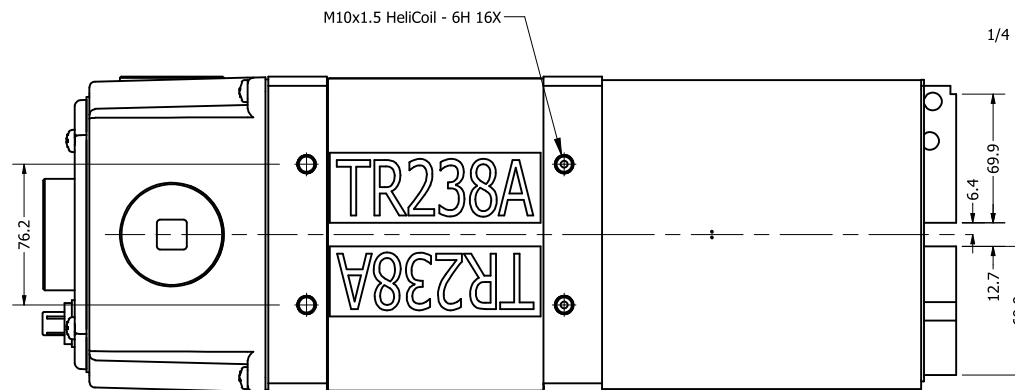
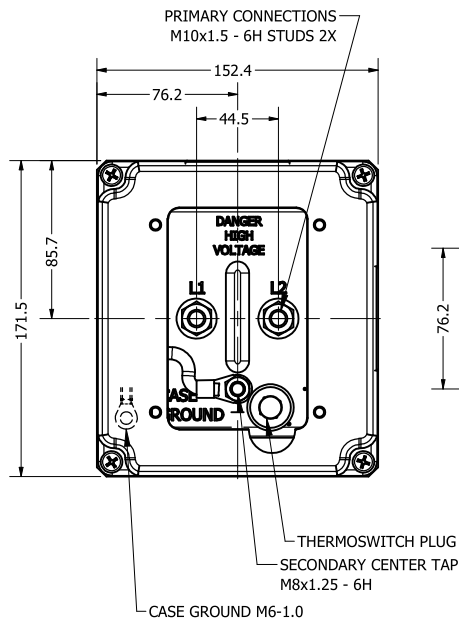
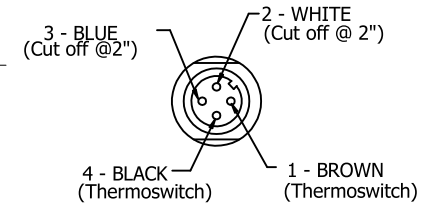
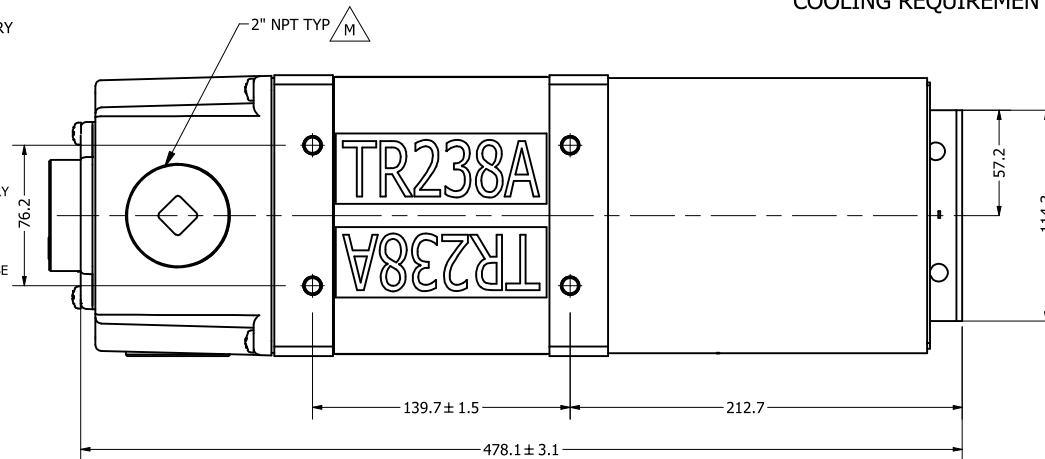
ROMAN MODEL	CUSTOMER REFERENCE	KVA @ 50% DUTY CYCLE	PRI V/ FREQ	V/SEC	URNS RATIO	MAX Δ P. / CIRCUIT
TDC-7080	TR237A	225	500V/1000HZ	13.1	38:1	14 PSI
TDC-7000	TR238A	225	650V/1000HZ	13.0	50:1	14 PSI
TDC-7362	TR239A	225	800V/1000HZ	13.1	61:1	14 PSI

COOLING REQUIREMENTS: 7.5 LPM PER CIRCUIT @ 30°C MAX.
15 LPM TOTAL



TRANSFORMER CASE MUST BE GROUNDED. TRANSFORMER WILL BE SHIPPED WITH A JUMPER CONNECTING SECONDARY CENTER TAP TO CASE. USER MUST PROVIDE APPROPRIATE GROUNDING OF SECONDARY CIRCUIT.
NOTE:
SECONDARY OUTPUT TERMINALS ARE DESIGNED AS ELECTRICAL CONNECTIONS, MECHANICAL FORCES ON THESE CONNECTIONS MAY VOID WARRANTY.

FOR APPLICATIONS ABOVE A 20% DUTY CYCLE, CONTACT ROMAN MANUFACTURING FOR ASSISTANCE.



NOTE*
The secondary terminals of this device are intended as an electrical connection only. Applications must be designed to minimize any forces applied to the secondary terminals, this can be accomplished by transferring forces to a structural member.

DIMENSIONS: MM

M	REPLACED 2" NPT REDUCER WITH 2" NPT PLUG. ECR 1497	JDD	KLY	3/20/2018
L	ADDED DIMENSION 54.0	PRS	BCC	1/26/2016
K	REDESIGNED DC PAD PER ECR 225	JCB	BCC	7/21/2015
J	ADDED "DUTY CYCLE" TO TABLE	JCB	BCC	11/6/2014
REV	DESCRIPTION	DATE		
<p>© 2015 Copyright RoMan Manufacturing. THIS DRAWING AND ALL THE INFORMATION AND TECHNOLOGY IN IT ARE EXCLUSIVE, CONFIDENTIAL AND PROPRIETARY TO RoMan Manufacturing, INC. THIS DRAWING IS OWNED BY RoMan Manufacturing, INC., AND UNLESS SPECIFICALLY AUTHORIZED IN WRITING, NO COPIES SHALL BE MADE OF THIS DRAWING, AND SHALL BE USED ONLY FOR THE LIMITED PURPOSE FOR WHICH IT IS DISCLOSED AND ONLY TO THE BENEFIT OF RoMan Manufacturing, INC., AND IT AND ANY COPIES, AUTHORIZED OR NOT, SHALL BE IMMEDIATELY RETURNED UPON ANY REQUEST THEREFORE.</p> <p>SCALE: NONE</p> <p>DATE: 9/20/2011</p> <p>DETAILER: bconner</p> <p>DESIGNER: bconner</p> <p>APPROX WEIGHT: 108.2 lbmass</p> <p>RoMan MANUFACTURING</p> <p>POWER SUPPLY</p>				
PHYSICAL DRAWING				DRAWING NUMBER: 7000-1

Rating Curve for RoMan TR238 TDC7000 , 2 coolant circuits at 2 GPM minimum (7.5 LPM) per circuit, 225 kVA @ 50% duty cycle and 13 VDC (transformer). 30 C max coolant inlet temp, 10 million weld life expectation at these conditions, Contact RoMan if duty cycle

