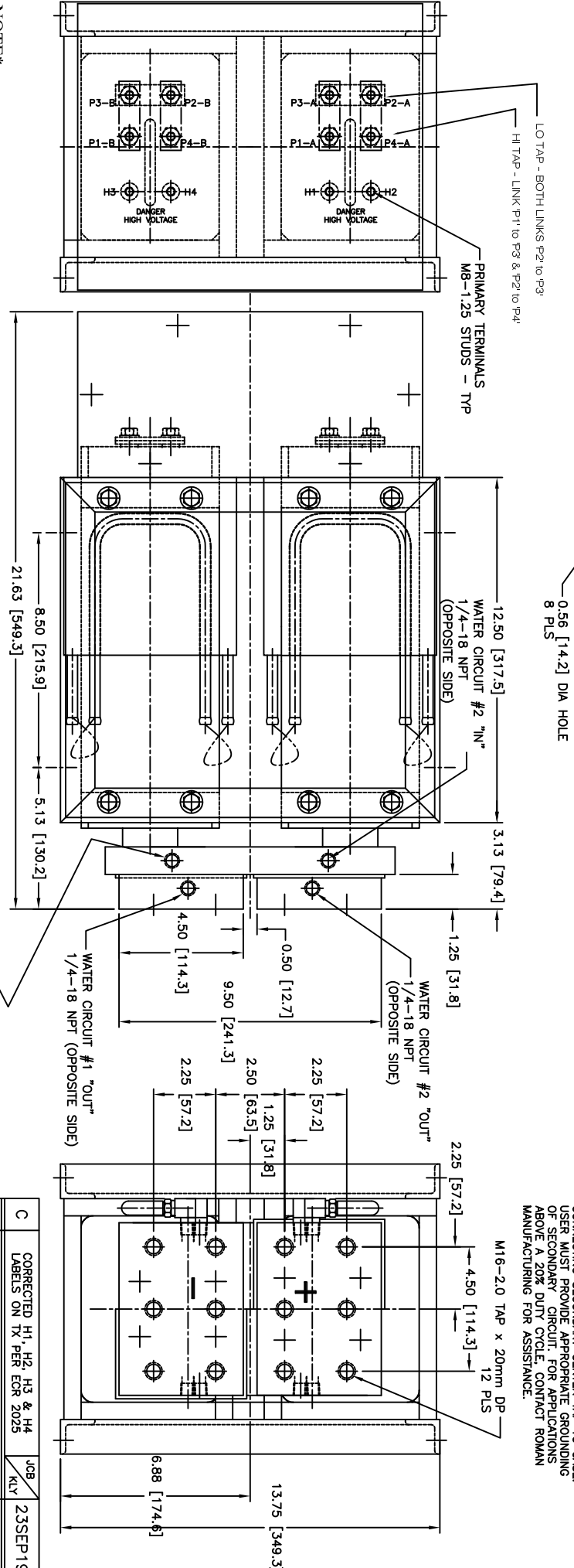
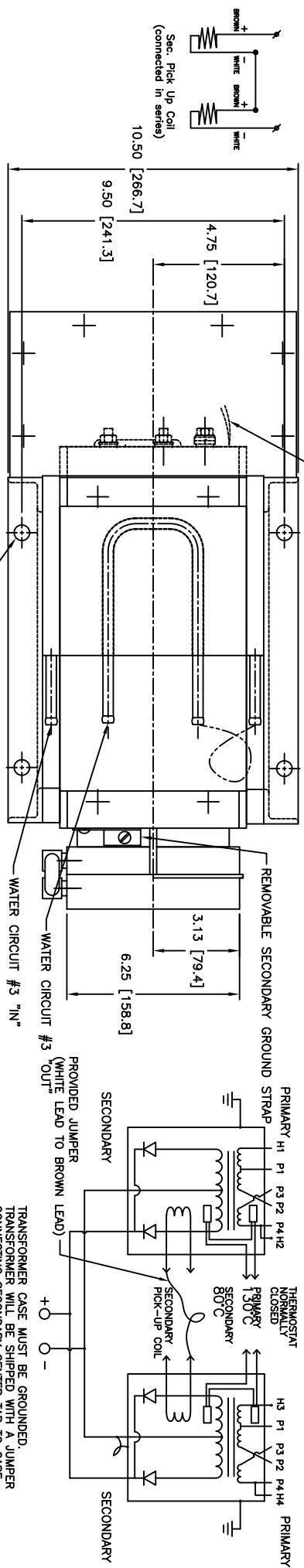


COOLING REQUIREMENTS:
 Circuits #1 & #2 7.5 LPM PER CIRCUIT @ 30° C MAX
 Circuit #3 (Core Cooling Plates) 3.8 LPM @ 30° C MAX
 18.8 LPM TOTAL

KVA ● 50% Dc	MODEL NUMBER	PRIMARY VOLT/FREQ	SECONDARY VOLTAGE		TURNS RATIO		EST. WEIGHT LBS	FLOW RATE LPM
			TAP 1	TAP 2	TAP 1	TAP 2		
320	TDC-7015	650V/1000HZ	9.0	13.0	72:1	50:1	250	18.8
320	TDC-7021	800V/1000HZ	9.09	13.11	88:1	61:1	250	18.8
320	TDC-7099	500V/1000HZ	9.0	13.1	55:1	38:1	250	18.8



NOTE*
 The secondary terminals of this device are intended as an electrical connection only. Applications must be designed to minimize any forces applied to the secondary terminals, this can be accomplished by transferring forces to a structural member.

RATING CURVE RC-5874
 DIMENSIONS = INCH [MM]

REV	DESCRIPTION	DATE	JOB
C	CORRECTED H1, H2, H3 & H4 LABELS ON TX PER ECR 2025	23SEP19	KLY

DATE: 01Sep11

SCALE: NONE

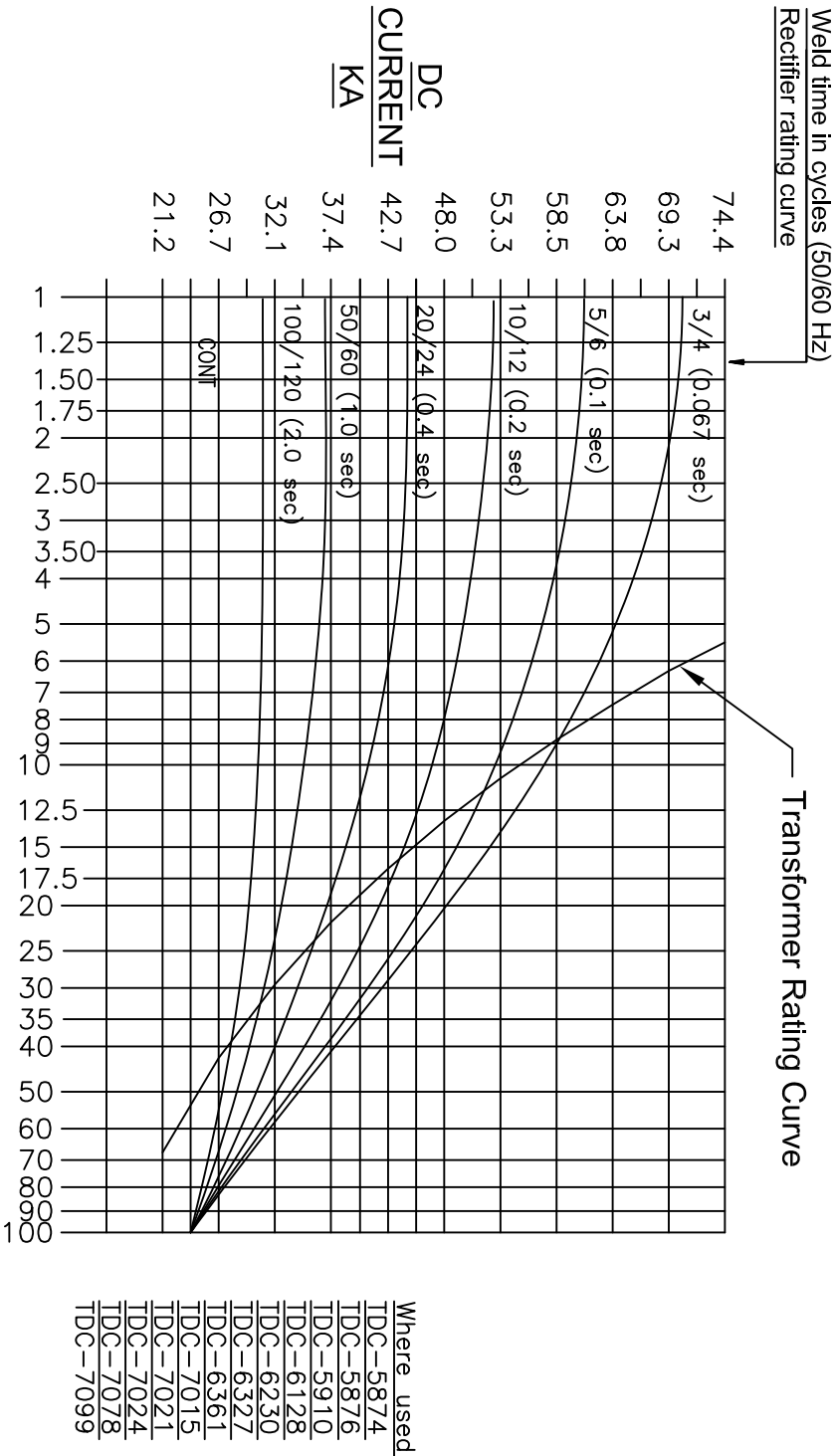
DATE: 01Sep11

MANUFACTURING

POWER SUPPLY

DRAWING NUMBER: 7015-1

Power Supply Rating Diagram, Single Phase, Center Tap Rectifier. Size 6 Rectifier



DUTY CYCLE (%)

REV	DESCRIPTION	DATE
A	Added TDC-6230 to where used list	05Jun08
B	Added TDC-6128 to where used list	04Aug08
C	ADDED TDC-5910 & TDC-6327 TO WHERE USED LIST	02OCT08

REV	DESCRIPTION	DATE
H	ADDED TDC-7078 TO "WHERE USED"	21MAR12
G	ADDED TDC-7021 TO "WHERE USED"	20OCT11
F	ADDED TDC-7024 TO "WHERE USED"	06OCT11
E	ADDED TDC-7015 TO "WHERE USED"	29SEP11
D	ADDED TDC-6361 TO "WHERE USED"	19NOV08

REV	DESCRIPTION	DATE
A	Added TDC-6230 to where used list	05Jun08
B	Added TDC-6128 to where used list	04Aug08
C	ADDED TDC-5910 & TDC-6327 TO WHERE USED LIST	02OCT08

REV	DESCRIPTION	DATE
H	ADDED TDC-7078 TO "WHERE USED"	21MAR12
G	ADDED TDC-7021 TO "WHERE USED"	20OCT11
F	ADDED TDC-7024 TO "WHERE USED"	06OCT11
E	ADDED TDC-7015 TO "WHERE USED"	29SEP11
D	ADDED TDC-6361 TO "WHERE USED"	19NOV08

REV	DESCRIPTION	DATE
A	Added TDC-6230 to where used list	05Jun08
B	Added TDC-6128 to where used list	04Aug08
C	ADDED TDC-5910 & TDC-6327 TO WHERE USED LIST	02OCT08

Notes:
These curves are based on rated water flow of 2 G.P.M. (7.5 L.P.M.)
Maximum water in temperature of 30°C.
For applications above a 20% duty cycle, contact Roman Manufacturing for assistance.

Rectifier Rating:
% Duty Cycle is based on shortest time from beginning of one weld to the beginning of next weld. On time/(On + Off time).

Transformer Rating:
% Duty Cycle is total "On" time in one minute.

RATING CURVE

DATE: 06Nov06	SCALE: NONE	DRAWN BY: KLY
ROWAN MANUFACTURING		
DRAWING NUMBER: RC-5874		APPROX WEIGHT: