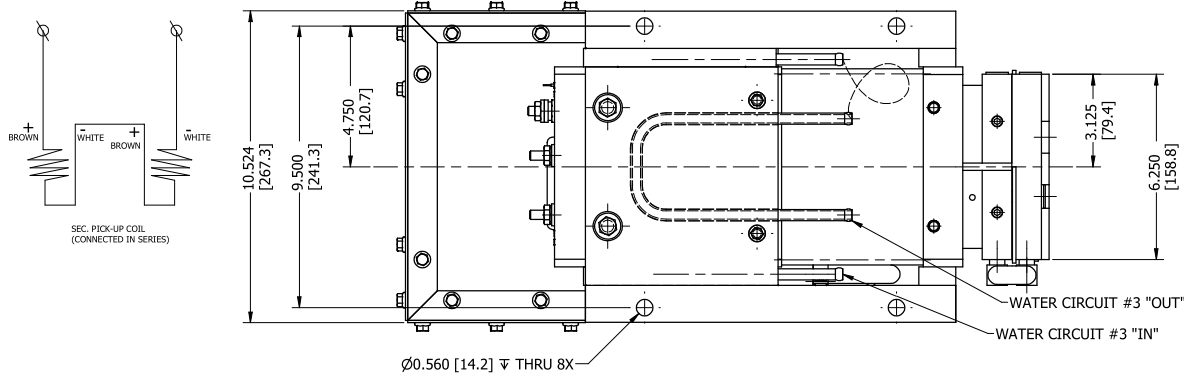
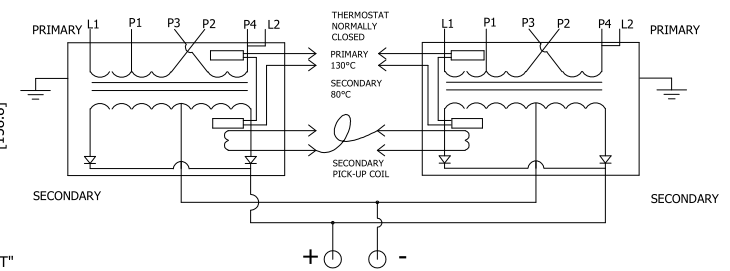


COOLING REQUIREMENTS:

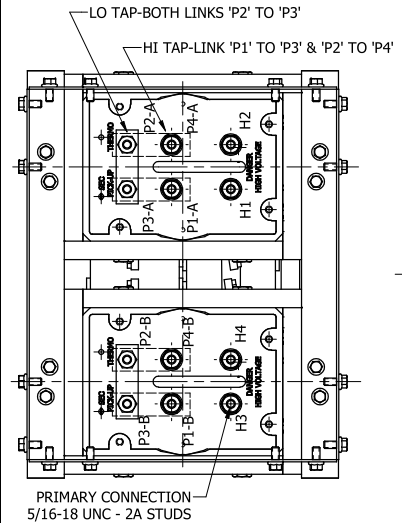
- CIRCUITS #1 & #2 2 GPM PER CIRCUIT @ 30° C MAX
- CIRCUIT #3 (CORE COOLING PLATES) 1 GPM @ 30° C MAX
- 5 GPM TOTAL



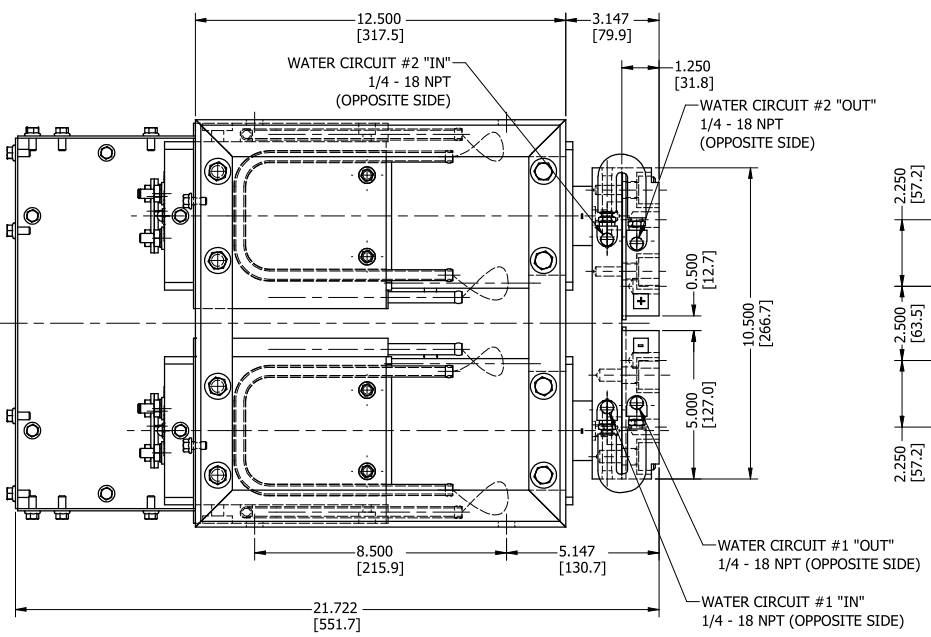
KVA @ 50% DC	MODEL NUMBER	PRIMARY VOLT/FREQ	SECONDARY VOLTAGE		TURNS RATIO		EST. WEIGHT LBS	FLOW RATE GPM
			TAP 1	TAP 2	TAP 1	TAP 2		
320	TDC-7078	650V/1000Hz	9.0	13.0	72:1	50:1	275	5



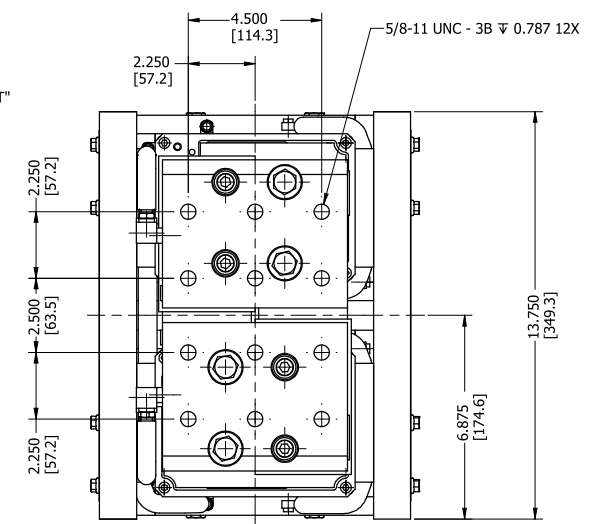
TRANSFORMER CASE MUST BE GROUNDED.
USER MUST PROVIDE APPROPRIATE GROUNDED OF SECONDARY CIRCUIT. FOR APPLICATIONS ABOVE A 20% DUTY CYCLE, CONTACT ROMAN MANUFACTURING FOR ASSISTANCE.



NOTE:
THE SECONDARY TERMINALS OF THIS DEVICE ARE INTENDED AS AN ELECTRICAL CONNECTION ONLY. APPLICATIONS MUST BE DESIGNED TO MINIMIZE ANY FORCES APPLIED TO THE SECONDARY TERMINALS, THIS CAN BE ACCOMPLISHED BY TRANSFERRING FORCES TO A STRUCTURAL MEMBER.

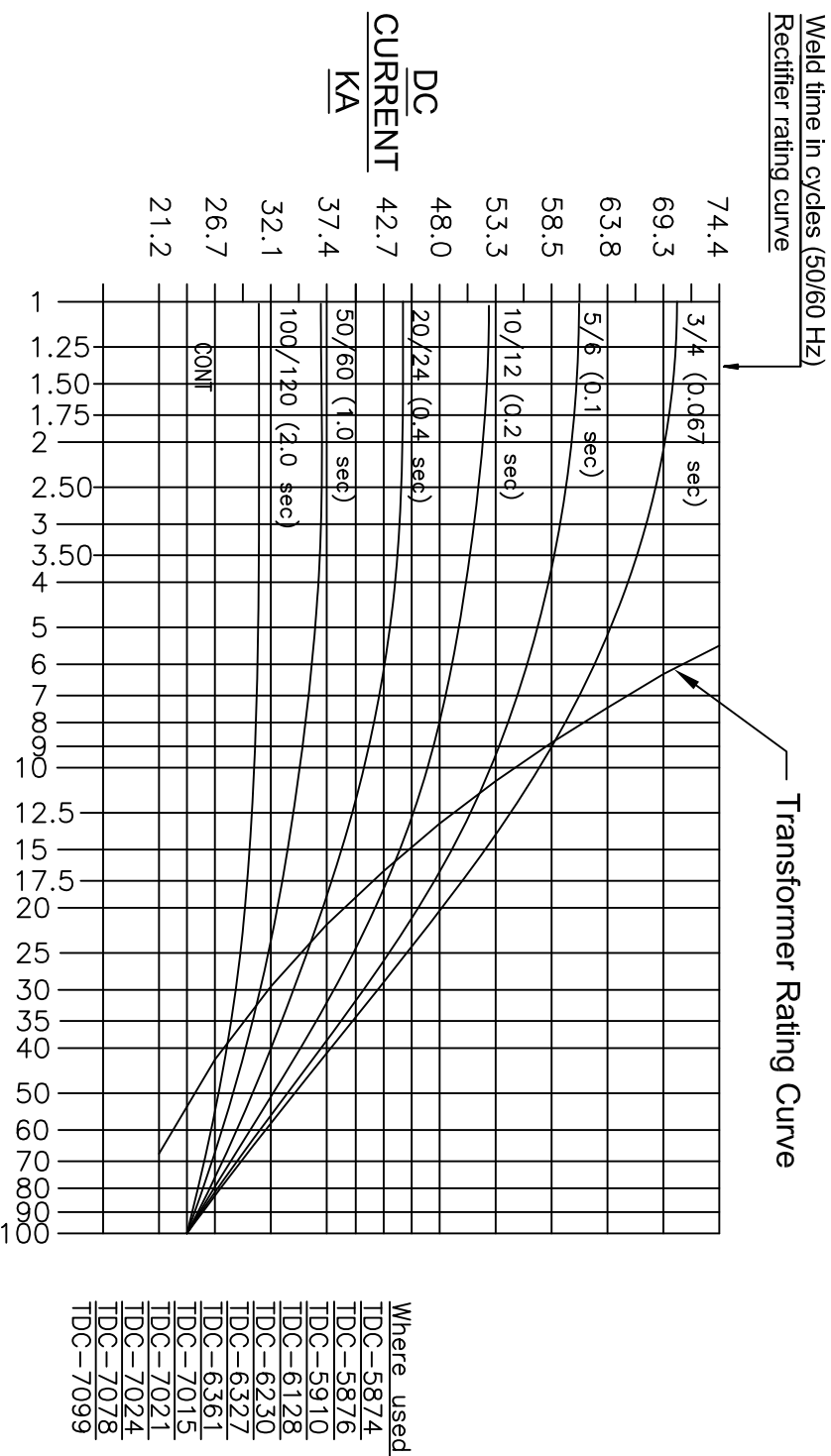


RATING CURVE RC-5874
DIMENSIONS = INCH [MM]



REV	DESCRIPTION	DATE
1	REMOVED GROUND STRAP	3/12/2014
2	DESCRIPTION	DATE
3	DESCRIPTION	DATE
4	DESCRIPTION	DATE
5	DESCRIPTION	DATE
6	DESCRIPTION	DATE
7	DESCRIPTION	DATE
8	DESCRIPTION	DATE
9	DESCRIPTION	DATE
10	DESCRIPTION	DATE
11	DESCRIPTION	DATE
12	DESCRIPTION	DATE
13	DESCRIPTION	DATE
14	DESCRIPTION	DATE
15	DESCRIPTION	DATE
16	DESCRIPTION	DATE
17	DESCRIPTION	DATE
18	DESCRIPTION	DATE
19	DESCRIPTION	DATE
20	DESCRIPTION	DATE
21	DESCRIPTION	DATE
22	DESCRIPTION	DATE
23	DESCRIPTION	DATE
24	DESCRIPTION	DATE
25	DESCRIPTION	DATE
26	DESCRIPTION	DATE
27	DESCRIPTION	DATE
28	DESCRIPTION	DATE
29	DESCRIPTION	DATE
30	DESCRIPTION	DATE
31	DESCRIPTION	DATE
32	DESCRIPTION	DATE
33	DESCRIPTION	DATE
34	DESCRIPTION	DATE
35	DESCRIPTION	DATE
36	DESCRIPTION	DATE
37	DESCRIPTION	DATE
38	DESCRIPTION	DATE
39	DESCRIPTION	DATE
40	DESCRIPTION	DATE
41	DESCRIPTION	DATE
42	DESCRIPTION	DATE
43	DESCRIPTION	DATE
44	DESCRIPTION	DATE
45	DESCRIPTION	DATE
46	DESCRIPTION	DATE
47	DESCRIPTION	DATE
48	DESCRIPTION	DATE
49	DESCRIPTION	DATE
50	DESCRIPTION	DATE
51	DESCRIPTION	DATE
52	DESCRIPTION	DATE
53	DESCRIPTION	DATE
54	DESCRIPTION	DATE
55	DESCRIPTION	DATE
56	DESCRIPTION	DATE
57	DESCRIPTION	DATE
58	DESCRIPTION	DATE
59	DESCRIPTION	DATE
60	DESCRIPTION	DATE
61	DESCRIPTION	DATE
62	DESCRIPTION	DATE
63	DESCRIPTION	DATE
64	DESCRIPTION	DATE
65	DESCRIPTION	DATE
66	DESCRIPTION	DATE
67	DESCRIPTION	DATE
68	DESCRIPTION	DATE
69	DESCRIPTION	DATE
70	DESCRIPTION	DATE
71	DESCRIPTION	DATE
72	DESCRIPTION	DATE
73	DESCRIPTION	DATE
74	DESCRIPTION	DATE
75	DESCRIPTION	DATE
76	DESCRIPTION	DATE
77	DESCRIPTION	DATE
78	DESCRIPTION	DATE
79	DESCRIPTION	DATE
80	DESCRIPTION	DATE
81	DESCRIPTION	DATE
82	DESCRIPTION	DATE
83	DESCRIPTION	DATE
84	DESCRIPTION	DATE
85	DESCRIPTION	DATE
86	DESCRIPTION	DATE
87	DESCRIPTION	DATE
88	DESCRIPTION	DATE
89	DESCRIPTION	DATE
90	DESCRIPTION	DATE
91	DESCRIPTION	DATE
92	DESCRIPTION	DATE
93	DESCRIPTION	DATE
94	DESCRIPTION	DATE
95	DESCRIPTION	DATE
96	DESCRIPTION	DATE
97	DESCRIPTION	DATE
98	DESCRIPTION	DATE
99	DESCRIPTION	DATE
100	DESCRIPTION	DATE

Power Supply Rating Diagram, Single Phase, Center Tap Rectifier.
Size 6 Rectifier



DUTY CYCLE (%)

Notes:			
These curves are based on rated water flow of 2 G.P.M (7.5 L.P.M.).			
Maximum water in temperature of 30°C.			
For applications above a 20% duty cycle, contact			
Roman Manufacturing for assistance.			
Rectifier Rating:			
1 % Duty Cycle is based on shortest time from beginning of one			
weld to the beginning of next weld. On time/(On + Off time).			
8 Transformer Rating:			
7 % Duty Cycle is total "On" time in one minute.			
4			
7			
R			
C			
H			
G			
F			
E			
D			
RATING CURVE			
DRAWING NUMBER:			
RC-5874			

ADDED TDC-7078 TO "WHERE USED"		BCC	21 MAR 12
ADDED TDC-7021 TO "WHERE USED"		BCC	20 Oct 11
ADDED TDC-7024 TO "WHERE USED"		BCC	06 Oct 11
ADDED TDC-7015 TO "WHERE USED"		BCC	29 Sep 11
ADDED TDC-6361 TO "WHERE USED"		BCC	19 Nov 08

ADDED TDC-5910 & TDC-6327 TO WHERE USED LIST		TVD	02 OCT 08
ADDED TDC-6128 to where used list		GMA	04 Aug 08
ADDED TDC-6230 to where used list		KLY	05 Jun 08

DESCRIPTION		DATE	
REV			
A			

2015 Copyright Roman Manufacturing. THIS DRAWING AND ALL THE INFORMATION AND TECHNOLOGY IT CONTAINS ARE EXCLUSIVE, CONFIDENTIAL, AND PROPRIETARY TO ROMAN MANUFACTURING, INC. THIS DRAWING IS OWNED BY ROMAN MANUFACTURING, INC., AND UNLESS SPECIFICALLY AUTHORIZED IN WRITING, NO COPIES SHALL BE MADE OF THIS DRAWING, AND SHALL BE USED ONLY FOR THE LIMITED PURPOSES FOR WHICH IT IS DISCLOSED. NO PART OF THIS DRAWING, INCLUDING THE INFORMATION, DESIGN, OR INVENTION, SHALL BE REPRODUCED OR TRANSMITTED IN ANY FORM OR BY ANY MEANS, ELECTRONIC OR MECHANICAL, INCLUDING PHOTOCOPYING, RECORDING, OR BY ANY INFORMATION STORAGE AND RETRIEVAL SYSTEM, WITHOUT PERMISSION IN WRITING FROM ROMAN MANUFACTURING, INC., AND IT AND ANY COPIES, SHALL BE DESTROYED WHEN NO LONGER REQUIRED.

SCALE: NONE

DATE: 06 Nov 06

MANUFACTURING

DRAWN BY: KLY

APPROX WEIGHT: