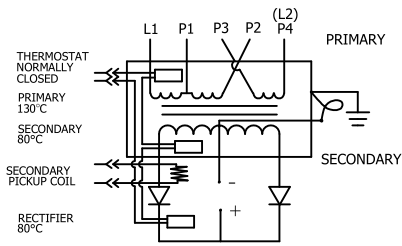
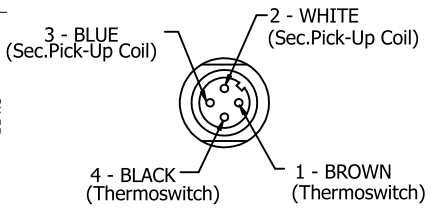
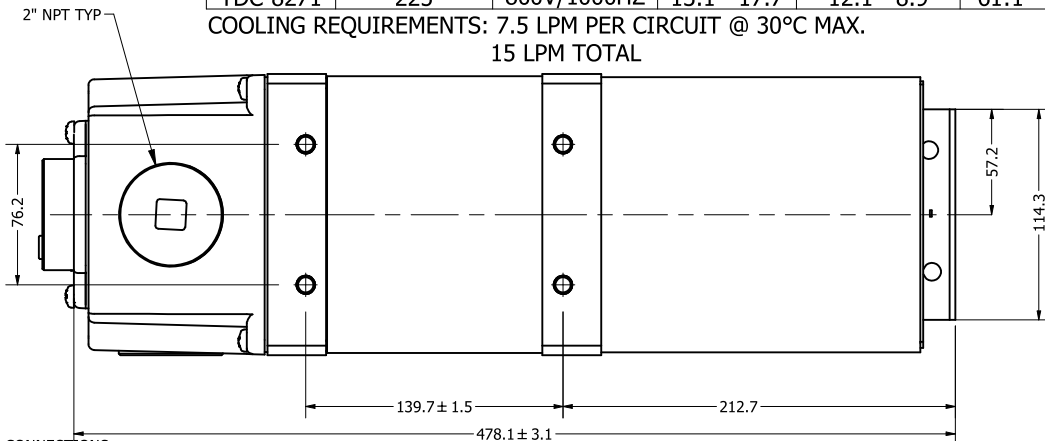


ROMAN MODEL	KVA @ 50% DUTY CYCLE	PRI V/ FREQ	SEC VOLTAGE	SECONDARY CONTINUOUS CURRENT (kA)	TURNS RATIO	MAX Δ P. / CIRCUIT	APPROX. WEIGHT
TDC-7537	225	650V/1000HZ	13.0 - 17.5	12.2 - 9.0	50:1 - 37:1	14 PSI	108 LBS [49 Kg]
TDC-7825	225	500V/1000HZ	13.1 - 17.8	12.1 - 8.9	38:1 - 28:1	14 PSI	108 LBS [49 Kg]
TDC-8271	225	800V/1000HZ	13.1 - 17.7	12.1 - 8.9	61:1 - 45:1	14 PSI	108 LBS [49 Kg]

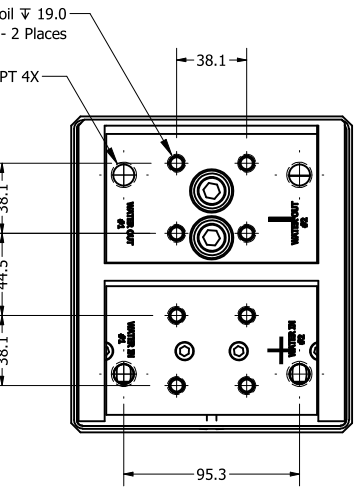
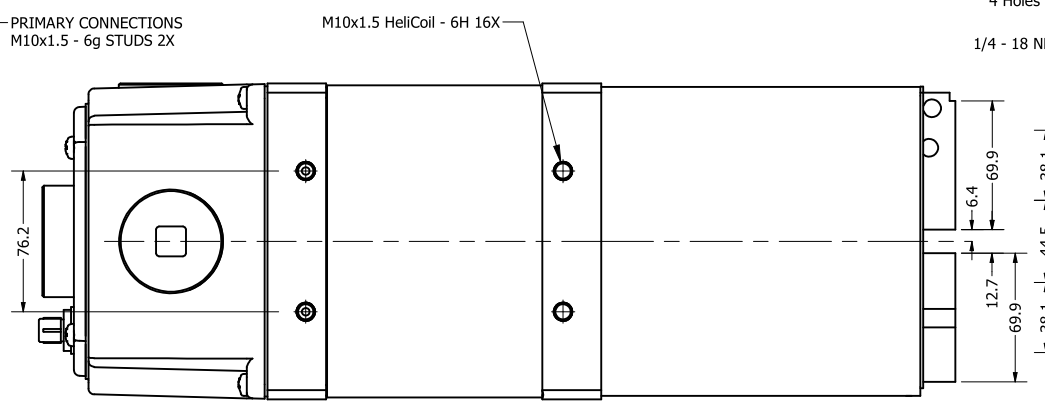
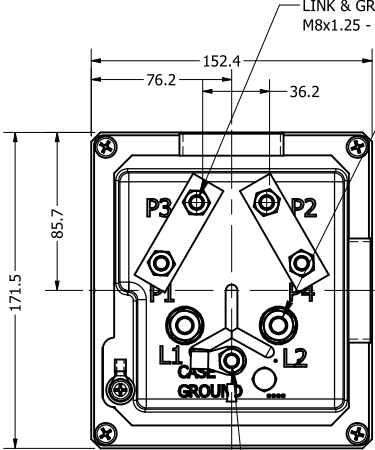
COOLING REQUIREMENTS: 7.5 LPM PER CIRCUIT @ 30°C MAX.  
15 LPM TOTAL



TRANSFORMER CASE MUST BE GROUNDED. TRANSFORMER WILL BE SHIPPED WITH A JUMPER CONNECTING SECONDARY CENTER TAP TO CASE. USER MUST PROVIDE APPROPRIATE GROUNDING OF SECONDARY CIRCUIT.  
NOTE: SECONDARY OUTPUT TERMINALS ARE DESIGNED AS ELECTRICAL CONNECTIONS, MECHANICAL FORCES ON THESE CONNECTIONS MAY VOID WARRANTY.  
FOR APPLICATIONS ABOVE A 20% DUTY CYCLE, CONTACT ROMAN MANUFACTURING FOR ASSISTANCE.



CONNECT P2-P3 FOR LO TAP  
OR P1-P3 & P2-P4 FOR HI TAP



VIEW SHOWN WITH COVER REMOVED

NOTE\*  
The secondary terminals of this device are intended as an electrical connection only. Applications must be designed to minimize any forces applied to the secondary terminals, this can be accomplished by transferring forces to a structural member.

DIMENSIONS: MM

REV	DESCRIPTION	DATE
N	ADDED "CONTINUOUS" TO SEC CURRENT INFO TO TABLE	5/18/20
M	ADDED SEC CURRENT INFO	1/29/2020
L	ADDED APPROX. WEIGHT	5/16/2019
K	SWITCHED P2 AND P3 IN SCHEMATIC	5/9/2019
J	ADDED 800V MODEL (TDC-8271)	1/25/2019

© 2017 Copyright RoMan Manufacturing. THIS DRAWING AND ALL THE INFORMATION AND TECHNOLOGY IN IT ARE EXCLUSIVE, CONFIDENTIAL AND PROPRIETARY TO RoMan Manufacturing, Inc. THIS DRAWING IS OWNED BY RoMan Manufacturing, Inc., AND UNLESS SPECIFICALLY AUTHORIZED IN WRITING, NO COPIES SHALL BE MADE OF THIS DRAWING, AND SHALL BE USED ONLY FOR THE LIMITED PURPOSE FOR WHICH IT IS DISCLOSED AND ONLY TO THE BENEFIT OF RoMan Manufacturing, Inc., AND IT AND ANY COPIES, AUTHORIZED OR NOT, SHALL BE IMMEDIATELY RETURNED UPON ANY REQUEST THEREFORE.

SCALE: NONE  
DATE: 7/8/2015

**RoMan** MANUFACTURING  
DETAILER: jbett  
DESIGNER: jbett  
APPROX WEIGHT: N/A

**POWER SUPPLY**

PHYSICAL DRAWING  
DRAWING NUMBER: 7537-1

**Rating Curve for RoMan TDC7537 , 2 coolant circuits at 2 GPM minimum ( 7.5 LPM) per circuit, 225 kVA @ 50% duty cycle and 17.5 VDC (transformer). 30 C max coolant inlet temp, 10 million weld life expectation at these conditions, Contact RoMan if duty cycle exceeds 40%**

