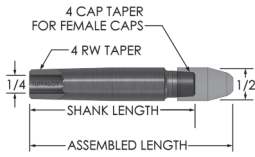


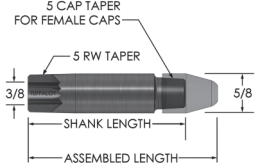
STRAIGHT SHANKS FOR FEMALE CAPS (CLASS 2*)

SHANKS 4 RW TAPER



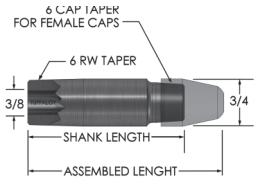
Shank Length	Assembled Length	Description	Part No.
1-1/2	2	TP-2406	163-2406
1-3/4	2-1/4	TP-2407	163-2407
2	2-1/2	TP-2408	163-2408
2-1/4	2-3/4	TP-2409	163-2409
2-1/2	3	TP-2410	163-2410
2-3/4	3-1/4	TP-2411	163-2411
3	3-1/2	TP-2412	163-2412
3-1/4	3-3/4	TP-2413	163-2413
3-1/2	4	TP-2414	163-2414

SHANKS 5 RW TAPER



Shank Length	Assembled Length	Description	Part No.
1-1/2	2	TP-2506	163-2506
1-3/4	2-1/4	TP-2507	163-2507
2	2-1/2	TP-2508	163-2508
2-1/4	2-3/4	TP-2509	163-2509
2-1/2	3	TP-2510	163-2510
2-3/4	3-1/4	TP-2511	163-2511
3	3-1/2	TP-2512	163-2512
3-1/4	3-3/4	TP-2513	163-2513
3-1/2	4	TP-2514	163-2514

SHANKS 6 RW TAPER



Shank Length	Assembled Length	Description	Part No.
1-1/2	2	TP-2606	163-2606
2	2-1/2	TP-2608	163-2608
2-1/2	3	TP-2610	163-2610
3	3-1/2	TP-2612	163-2612

'E' NOSE
4 AND 5 CAP



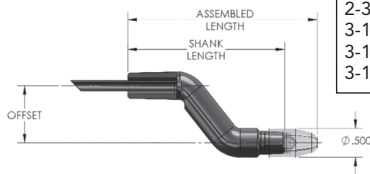
'F' NOSE
4 AND 5 CAP



For improved cooling, female shanks are drilled through (to put water in contact with cap). Shanks may be ordered with a blind water hole, upon request.

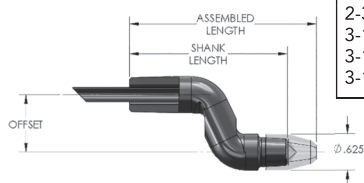
BENT SHANKS FOR FEMALE CAPS (CLASS 2*)

SHANKS 4 RW TAPER



Shank Length	Offset	Length	Description	Item No.
2-3/4	1/2	3-1/4	TP-2411-08	164-2442
2-3/4	3/4	3-1/4	TP-2411-12	164-2445
2-3/4	1	3-1/4	TP-2411-16	164-2447
3-1/4	1/2	3-3/4	TP-2413-08	164-2465
3-1/4	1-1/4	3-3/4	TP-2413-20	164-2480
3-1/2	1	4	TP-2414-16	164-2490

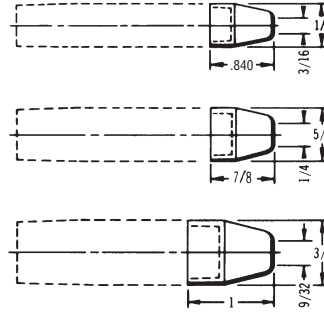
SHANKS 5 RW TAPER



Shank Length	Offset	Length	Description	Item No.
2-3/4	1/2	3-1/4	TP-2511-08	164-2542
2-3/4	3/4	3-1/4	TP-2511-12	164-2545
2-3/4	1	3-1/4	TP-2511-16	164-2547
3-1/4	1/2	3-3/4	TP-2513-08	164-2565
3-1/4	1	3-3/4	TP-2513-16	164-2570
3-1/4	1-1/4	3-3/4	TP-2513-20	164-2580

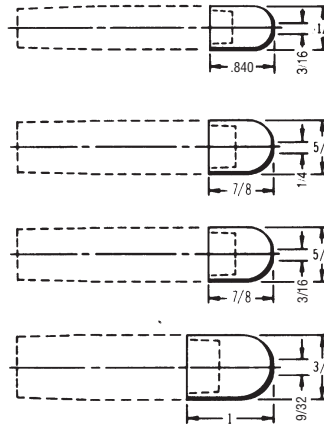
FEMALE CAPS

POINTED TIPS 'A'



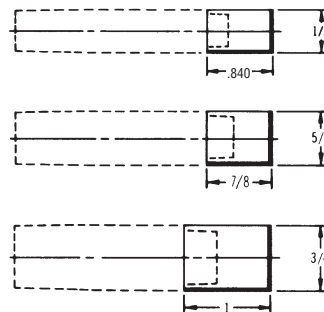
Alloy Class	Taper of Adapter Shank	Description	Part No.
2 2 (Cu Cr Zr)	4RW	TP-24A	125-0241
	4RW	TP-24AZ	126-0241
2 2 (Cu Cr Zr)	5RW	TP-25A	125-0251
	5RW	TP-25AZ	126-0251
2 2 (Cu Cr Zr)	6RW	TP-26A	125-0261
	6RW	TP-26AZ	126-0261

DOME TIPS 'B'



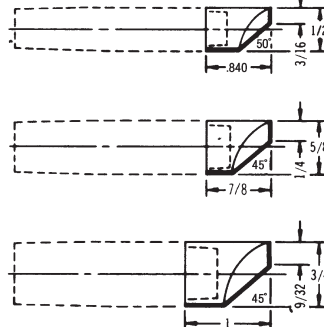
Alloy Class	Taper of Adapter Shank	Description	Part No.
2 2 (Cu Cr Zr)	4RW	TP-24B	125-0242
	4RW	TP-24BZ	126-0242
2 2 (Cu Cr Zr)	5RW	TP-25B	125-0252
	5RW	TP-25BZ	126-0252
2 2 (Cu Cr Zr)	5RW	TP-25B-.20	125-0252.20
	5RW	TP-25BZ-.20	126-0252.20
2 2 (Cu Cr Zr)	6RW	TP-26B	125-0262
	6RW	TP-26BZ	126-0262

FLAT TIPS 'C'



Alloy Class	Taper of Adapter Shank	Description	Part No.
2 2 (Cu Cr Zr)	4RW	TP-24C	125-0243
	4RW	TP-24CZ	126-0243
2 2 (Cu Cr Zr)	5RW	TP-25C	125-0253
	5RW	TP-25CZ	126-0253
2 2 (Cu Cr Zr)	6RW	TP-26C	125-0263
	6RW	TP-26CZ	126-0263

OFFSET TIPS 'D'



Alloy Class	Taper of Adapter Shank	Description	Part No.
2 2 (Cu Cr Zr)	4RW	TP-24D	125-0244
	4RW	TP-24DZ	126-0244
2 2 (Cu Cr Zr)	5RW	TP-25D	125-0254
	5RW	TP-25DZ	126-0254
2 2 (Cu Cr Zr)	6RW	TP-26D	125-0264
	6RW	TP-26DZ	126-0264

* Class 3 Available

