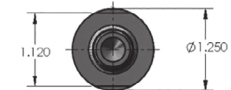
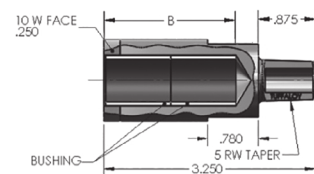
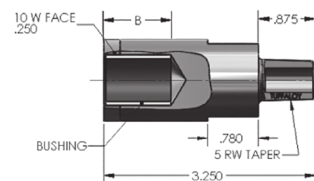
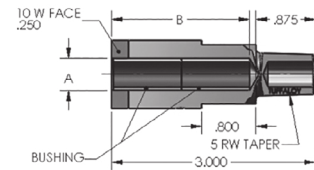
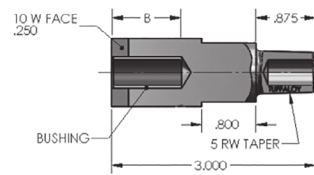


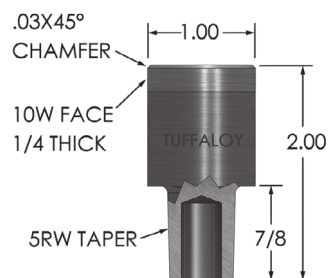
TUFFALOY 5 RW STUD ELECTRODES

These series of Stud electrodes are made from RWMA Class 2 (C18200) alloy with 10W (copper tungsten) on the weld face and wrench flats for easy removal from holders. The Insulator is made to withstand the constant friction that is applied as the stud is inserted and removed.

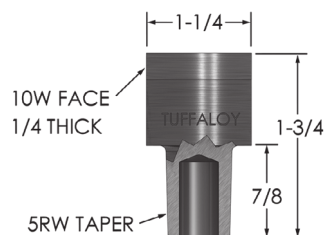
Screw Thread Size	INSULATOR		Part Number
	ID. A	Length B	
#10	.218	1"	175-0316-4032-10W
6mm	.243		175-0316-40062-10W
1/4	.256		175-0316-4042-10W
5/16, 8mm	.319		175-0316-4052-10W
3/8	.381		175-0316-4062-10W
10mm	.400		175-0316-40102-10W
#10	.218	2"	175-0316-4031-10W
6mm	.243		175-0316-4006-10W
1/4	.256		175-0316-4041-10W
5/16, 8mm	.319		175-0316-4051-10W
3/8	.381		175-0316-4061-10W
10mm	.400		175-0316-4010-10W
7/16	.444	1"	175-1313-4372-10W
12mm	.479		175-1313-40122-10W
1/2	.506		175-1313-4382-10W
9/16	.569		175-1313-4392-10W
5/8	.652		175-1313-4402-10W
11/16	.694	2"	175-1313-4412-10W
3/4	.777		175-1313-4422-10W
7/16	.444		175-1313-4371-10W
12mm	.479		175-1313-4012-10W
1/2	.506		175-1313-4381-10W
9/16	.569		175-1313-4391-10W
5/8	.652		175-1313-4401-10W
11/16	.694		175-1313-4411-10W
3/4	.777		175-1313-4421-10W



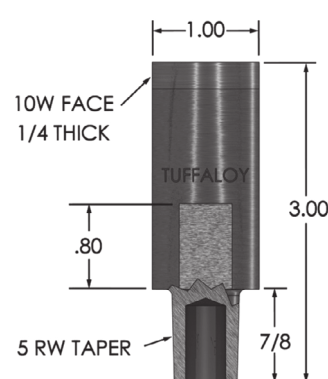
BACKUP ELECTRODES FOR UPPERS



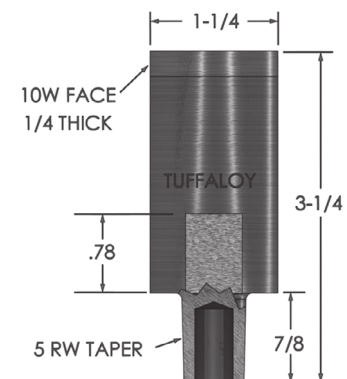
186-0311-10W



186-0313-10W



186-0316-10W



186-1313-10W

